

The Buzz



Brighstone C.E.
Primary School

15th November 2024



Learning and Achieving Through
Love, Courage and Respect

Dear parents, carers and children,



Everyone looked fantastic with their funky hair today for **Children in Need**! We had glitter, colour, clips, and all sorts of other permutations of hairstyles and accessories. Also, last week, I set a rather ambitious challenge for the whole school community to total up the miles that they walk, run, cycle and swim for the week (aiming for 1000 miles). We have received quite a few responses to this, along with the sponsors and donations. In total, people recorded 361 miles, which is fantastic! Huge thanks for all your donations for this challenge and for having funky hair. The donations kept coming in throughout the day, and we have now raised an incredible:



£223.45!



That is absolutely fantastic. Thank you for your huge generosity.

On Sunday, members of our school community took part in the **Remembrance Parade** through the village, either representing a local group or our school. Thank you for coming along to take part in such an important event. On Monday morning, Paul Bradley, Chair of the Brighstone Royal British Legion, came into Collective Worship to talk to the children about remembrance. He was very impressed by the knowledge that the children had about why we have Remembrance Day. Later in the morning, at 11am the whole school gathered at the War Memorial to pay our respects to the fallen. We listened to Jackie's prayers and to the Last Post, before singing our song 'We Will Remember'. Despite technical difficulties, the children weren't phased, and continued singing a Capela. Well done and thank you.



This week, we welcomed visitors of different faiths as part of **Inter Faith Week**. Our theme was 'community' to link with one of our RE 'Golden Thread' concepts, and we enjoyed hearing all about the concept of community in different religions. The classes also carried out a range of other activities learning about community in other religions. Thank you to Harry (Christian), Sylvia (Quaker and Buddhist), Muhammed (Muslim) and Jonathon (Jewish) for coming in to talk to the children and share artefacts.



With best wishes,

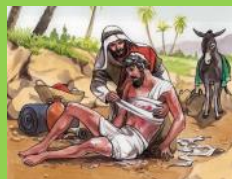
Mrs Lennon and the Brighstone Team

Collective Worship

This week's focus was 'Compassion - Being a Good Neighbour'.

We heard the story of The Good Samaritan, and learnt why Jesus told that story. One of the crowd asked him "Who is my neighbour?".

Why do you think Jesus told that story? What answer do you think he gave to the question "Who is my neighbour"?



By telling the story of the Good Samaritan, Jesus was teaching us that everyone in need is our neighbour, even if they don't live by us or if they are not our special friends.

Who have you helped recently?
Was it someone you know well?
Was it a stranger (e.g. a charity or someone else)?
Was it someone in school?
Was it a friend or a family member?

A Prayer for Compassion

Jesus, help my eyes to see all the good you send for me.

Jesus, help my ears to hear calls for help from far and near.

Jesus, help my feet to go in the way that you will show.

Jesus, help my hands to do all things loving, kind and true.

Amen



School Dinners

Children in **Year R, 1 and 2** are entitled to a 'universal' free school meal everyday.

Children in Years 3-6 are charged at **£3.20** per day.

No Baguettes

Week 3	Monday	Tuesday	Wednesday	Thursday	Friday
Option 1	Pizza	Bangers and Mash	Roast Chicken	Chicken Curry	Fish Fingers
Option 2	BBQ Quorn Fillet	Quorn Sausages	Veggie Slice	Veggie Pasta	Omelette
Dessert	Brownie with Fruit	Bread & Butter Pudding	Cookie	Shortbread	Ice Cream

Poetry Corner

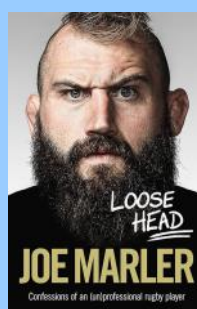


Reading Recommendations

Each week we will include a book recommendation from a child and/or adult.

This week, Mr Freeman recommends *Loose Head* by Joe Marler.

I recommend this book because it's hugely entertaining and full of funny rugby antics and anecdotes.



Safeguarding

If you have a concern about a child you can call the police on 999 if you feel they are at risk of immediate harm

You can contact the NSPCC:

Contact the NSPCC Helpline

If you have any concerns at all about a child's safety or wellbeing, don't hesitate to contact us.

Call us or email help@nspcc.org.uk

0808 800 5000

[Find out more](#)

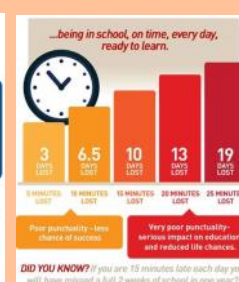
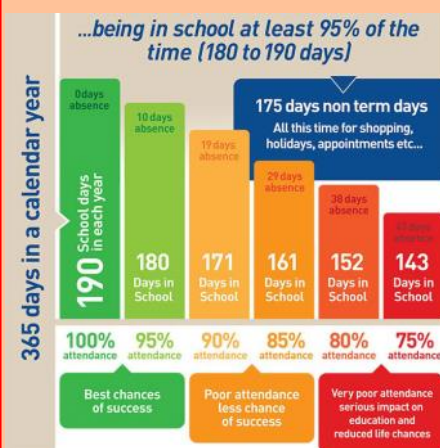
Or call children's services 0300 300 0117

Attendance Matters!

Week Commencing 11th November 2024
Whole School attendance target: 96.5%

Actual Attendance: 96.21%

Late marks this week: 10



<https://www.nhs.uk/live-well/is-my-child-too-ill-for-school/>

Golden Book

Bumble Bee	Luka-Bear and George for being super focused and eager in our PVPG lesson on common nouns. Tahnee for listening and remembering how the Great Fire of London started.
Honey Bee	Annie and Luna for working really well in DT while exploring how pneumatic toys might work.
Ivy Bee	Daniel for the speed and clarity in which he completed an historical family tree - matching key facts to members of Charles I's family.
Bee-Haviour	Hugh for helping others so willingly in the after-school origami club and being so kind to Mrs Jones.
Sports Bee	Charlotte R for putting fantastic effort into her Gymnastics routine.
EARA	Poppy S for helping us tidy the play equipment at lunchtime. Charlie for giving up his free time to play with Oscar H.





THE BSA ASTRA RECYCLING BIN HAS COLLECTIONS EVERY MONTH!

so dont forget, as Christmas approaches, and you're looking to declutter bear our donations bin in mind!

Remember this includes clothes, shoes and boots, accessories and bedding (no duvets or pillows)...

...and Cuddly toys!!



Brighstone Church of England Aided Primary School

You have helped raise **£236.34**

23 days left

CASHPOT FOR SCHOOLS

We're still collecting!!
Scan your Asda rewards app with EVERY shop!

ASDA Rewards Pounds, not points

ASDA Rewards Pounds, not points

INTRODUCING CASHPOT FOR SCHOOLS!

Nominate 'Brighstone Primary School' via the Asda Rewards app to help build our cashpot.

With every shop, 0.5% of your total gets donated to us.

CASHPOT FOR SCHOOLS

Only with **ASDA Rewards**





BRIGHSTONE SCHOOL ASSOCIATION

PRE LOVED

CHRISTMAS
Jumper
SALE

.....

If you have any good quality christmas jumpers that your kids have outgrown, please donate them for our rail.

.....

Place clean donations in the box in the school foyer.

.....

RAIL will be up from
25 NOVEMBER 2024

BSA CHRISTMAS RAFFLE DONATIONS

Could your business or your employer help the BSA by contributing a prize for our Christmas Raffle?

Prizes of all kinds are welcomed and appreciated

Contact us via facebook messenger or email
Brighstoneschoolassoc@gmail.com

CHRISTMAS PRIZE DRAW RAFFLE

Tickets £1 each. Please fill in all contact details in full.

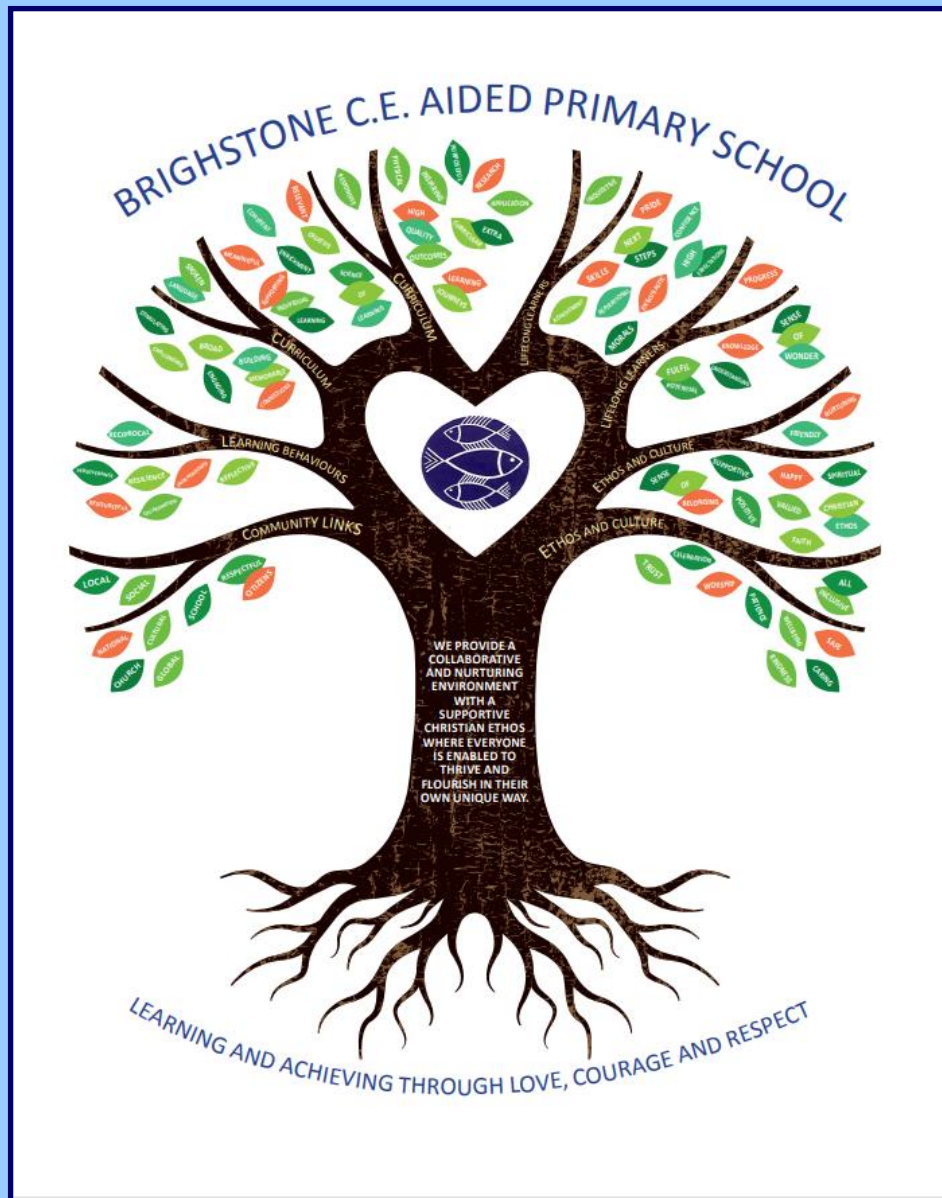
Prize Draw to be drawn on Saturday 14th December

Some raffle tickets for this years prize draw will be sent home in book bags this evening.

Please sell amongst family and friends to help raise money for the BSA.

Enter and be in with a chance to win fantastic prizes!

Our Vision Statement



A vision statement 'seeks to inspire and give direction to all stakeholders (staff, children, parents, governors and the wider community). It is an aspirational description of what an organisation would like to achieve or accomplish in the mid-term or long-term future. It is intended to serve as a clear guide for choosing current and future courses of action'.

Our vision statement works alongside our mission statement 'Learning and Achieving Through Love, Courage and Respect', which includes our values, to reflect and guide our culture, ethos and decision making. This is also on our website.

As a school, in 2020 we worked together with a range of stakeholders to write our vision statement, and we decided to create a visual vision statement to make it stand out and be memorable. Each part of the image has been carefully chosen to represent our school:

Our values, as part of the mission statement (tagline), are the roots and foundation that feed and nourish our school.

The vision statement is the main body (trunk) that guides all our actions.

The branches reflect the different aspects of life in our school.

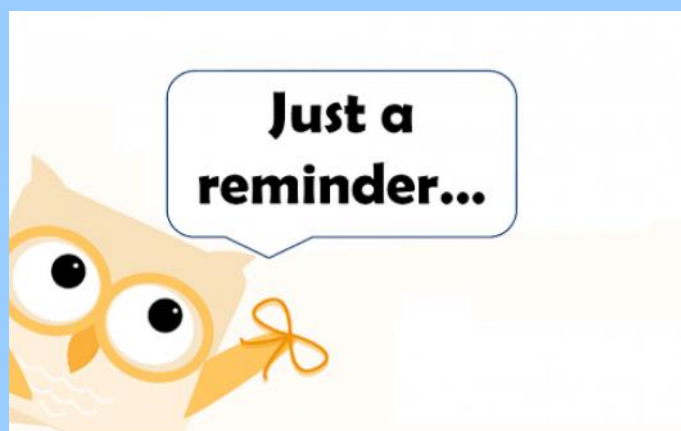
The leaves show examples of how these aspects are shown.

The school logo in the centre of the tree represents the Christian ethos that is at the heart of everything we do.

Reminders

- All hair accessories, socks, shoes and trainers must be in the school colours: navy blue, grey, black or white (no novelty socks)
- All long hair must be tied back (pony tail, bun, plaits etc...) to avoid the spreading of headlice
- No jewellery to be worn other than stud earrings, which must be removed or taped over on PE days
- Gates open at 8.25am and are locked at 8.30am, and in the afternoon, gates are opened at 2.55pm and locked at 3.10pm
- As teachers are busy welcoming and supervising children first thing in the morning, please could all messages be given to Mrs Pelosi in the office, who will then pass them on to the teacher
- Only **water** is allowed in drinks bottles, and snacks must be fruit only

Thank you!





Respect Charter

at Brighstone CE Aided Primary School

At Brighstone CE Aided Primary School we believe staff, parents and children are entitled to a safe and protective environment in which to learn and work. We strive to ensure that our school offers a warm and nurturing environment. All members of the school community and visitors should demonstrate mutual respect, to feel safe, work together and to use restorative approaches as the foundation of our practice. Any behaviour that may lead to feelings of harassment, alarm or distress to members of our community, will not be tolerated and action taken.

Expectations

- o That all adults set a good example to children at all times, showing them how to get along with all members of the school and the wider community.
- o That no one - staff, governors, parents, carers, volunteers or children - be subjected to abusive behaviour or any form of threats from visitors on the school premises.
- o That physical attacks and threatening behaviour, abusive or insulting language verbal or written (including on social media), to staff, governors, parents, carers, volunteers, children and other users of the school premises will not be tolerated and may lead to a ban from school premises and/or police action.

Types of behaviour that are considered serious and unacceptable

This is not an exhaustive list but seeks to provide illustrations of such behaviour:

- o Shouting, either in person or over the telephone
- o Speaking in an aggressive/threatening tone
- o Physically intimidating, e.g. standing very close
- o The use of aggressive hand gestures/exaggerated movements
- o Physical threats
- o Shaking or holding a fist towards another person
- o Swearing and name calling
- o Pushing
- o Slapping, punching, hitting or kicking
- o Racist, homophobic or other hateful behaviour
- o Sexist comments or sexual innuendo
- o Disrespecting religion or belief
- o Inappropriate communications (posting on Social Networking sites, emails or letters, etc.) which could bring the school into disrepute or be deemed as bullying, harassment and/or a hate-related

The school reserves the right to take any necessary actions to ensure that members of the school community are not subjected to any form of abuse in line with policy and procedure. If you choose to engage in these behaviours you may be asked to leave the site or the police may be called.

Thank you for your understanding and support

If your message is **urgent** or about **attendance** contact Mrs Pelosi in the **office**:
01983 740285
office@brighstoneprimary.org.uk
Office Hours 8am - 4pm

If you would like to speak with the **Headteacher** Mrs Lennon, you can find her at the school gate every morning or you can call 740285 to make an appointment with her



For **general enquiries** you can call or email the office, text the school messaging service or send a message to our school **Facebook** page: <https://www.facebook.com/BrighstoneCEPrimarySchool>
Our Facebook page is open so you do not need a personal account to view it

If you have concerns about your child's **learning** and progress, email the class teacher in the first instance and allow at least 1 working day for a reply:

Years R, 1 & 2 - teacher.bumblebee@brighstoneprimary.org.uk
Years 3 & 4 - teacher.honeybee@brighstoneprimary.org.uk
Years 5 & 6 - teacher.ivybee@brighstoneprimary.org.uk

If you have concern regarding **safeguarding** or your **child's mental health and wellbeing** please contact Mrs Jones. You can speak to her on the playground every morning, call into the school office or email m.jones@brighstoneprimary.org.uk
safeguarding@brighstoneprimary.org.uk

Our **Newsletter** is published every Friday with key information for parents and carers. You can find it on our school website: <https://www.brighstoneprimary.org.uk/category/the-buzz/>

Contact us



If you have a safeguarding concern about a child outside of school hours you can call the police on 999 if you feel they are at risk of immediate harm or contact Children's Services on 0300 300 0117

Please be reminded that all children need to wear the correct PE kit on PE days.
The correct PE kit is also needed for sports clubs.
Socks and hair accessories must be in the school colours.

School Day Timings

The school day is as follows:

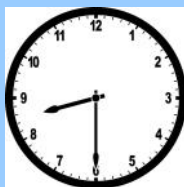
8.25am: Gates open

8.30am: School starts

3pm: School ends

3.10pm: Gates close

Many thanks.



Key dates this year

- Monday 18th November: Admissions round for primary applications opens
- Friday 6th December: Whole school visit to the pantomime in Portsmouth
- Saturday 7th December: BSA Christmas Fair 1pm - 4pm
- Friday 13th December: Mufti-Day for BSA hampers
- Wednesday 18th December: Christingle Service 1.30pm (details to follow)
- Thursday 19th December: Christmas Jumper Day; Christmas Carol Concert 1.30pm and 6pm (details to follow)
- Friday 20th December: Last day of term
- Monday 6th January: Back to school
- Wednesday 15th January: Deadline for primary applications
- Monday 10th February: KS2 trip to Harry Potter World
- Friday 14th February: Last day of term
- Monday 24th February: Back to school
- Monday 3rd March: National offer day for secondary admissions
- Tuesday 18th and Wednesday 19th March: Parents evenings
- Friday 4th April: Last day of term
- Wednesday 16th April: National offer day for primary admissions
- Tuesday 22nd April: Back to school
- W/c Monday 12th May: Y6 SATs week
- Friday 23rd May: Last day of term
- Tuesday 3rd June: Back to school
- Tuesday 15th July: Parents evening
- Friday 25th July: Last day of term

This list is regularly updated.

School Term Dates for 2024-2025

Please note that the school will be closed on the following days in this academic year:

Day 1: Monday 2nd September 2024

Day 2: Tuesday 3rd September 2024

Day 3: Monday 2nd June 2025

Day 4: Monday 28th July 2025

Day 5: Tuesday 29th July 2025

Term dates are available on our school website.

