

The Buzz

13th December 2024



Brighstone C.E.
Primary School



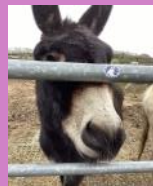
Learning and Achieving
Through Love, Courage
and Respect



Dear parents, carers and children,

What a week it has been with all the **illnesses** going round. We have had quite a few children (and staff) off with coughs, colds and high temperatures. This is a good time to remind your children to wash their hands thoroughly, to cough into their elbows, and to throw away used tissues. If you are unsure of whether to send your child in or not, there is useful guidance on the NHS website: <https://www.nhs.uk/live-well/is-my-child-too-ill-for-school/>

Despite the illnesses, we have still had a busy week. On Tuesday, Honey Bee class visited the **Donkey Sanctuary** as part of their Science lessons. They had a lovely day there, where they learned all about what the donkeys eat and how they keep healthy. Then they mixed up some donkey feed before stroking Moses, the very friendly donkey. More photos are available on our Facebook page.



Honey Bee class also finished their pneumatic toys this week. We are very impressed with their creations! See Facebook for photos.

The **BSA Christmas Fair** on Saturday was a huge success, despite the inclement weather. We had our very own elf standing outside drawing the crowds in by ringing the school bell. We had good feedback from the day, both from visitors and from stall holders. A huge thank you to all the parents and staff who helped on the day and with all the preparations, as well as to those who turned up to enjoy the day itself. Here's to the next one! We all really appreciate everything that the BSA does for the school. Remember, everyone is automatically a member, so do please let Richard, Sarah or Jenny know if you are able to help out in any way at all.



Yesterday, KS2 enjoyed a visit from **Peter J. Murray**, children's author, who wowed the children with stories from his new book series. He inspired some of the children to wear their hair in space buns today, just like one of the characters, and many children then bought some books today, and also got them signed by the author himself!



Next week sees our Christmas events. On Wednesday, the children will be making their Christingles in preparation for the Christingle Service in the afternoon (please remember to bring in a large orange). On Thursday, our Christmas Concert will be taking place at 1.30pm and 6pm. Tickets are going fast! Remember, it is also Christmas Jumper day on Thursday, as well.

I hope you have a lovely weekend.

With best wishes,

Mrs Lennon and the Brighstone Team



Collective Worship

This week's focus was 'Compassion - God of the Unexpected'.



We heard the story of when the angels visited the shepherds on the hillside, to tell them the amazing news of Jesus' birth. Shepherds were lowly, poor members of society, looked down on by others, but they were the first to know about Jesus. This was unexpected. Why did God do this? Who would you usually expect to be the first ones told about the birth of the Saviour of the World?

Jesus was born in a stable, and laid in a manger. Where would you usually expect a very special baby to be born and laid?

One of the names of Jesus is Emmanuel, which means 'God with us'. Jesus was sent by God the Father to come among us in a most unexpected way. He was not born into an important family but to an ordinary mother. He was not laid in a beautiful crib in a palace, but in a feeding trough for animals. The announcement of his birth was not made to kings and world leaders but to poor shepherds.



Christmas Prayer

God of compassion,
You came among us in a way people didn't expect.

You came to us in Jesus.

God of compassion, you come among us today in ways we don't expect.

You come to us where we are.

Help us to recognise you among us and welcome you afresh this Christmas.

Amen

(You will have noticed that our colour is currently purple, which is the colour for Advent, demonstrating the anticipation of the coming King.)



School Dinners

Children in **Year R, 1 and 2** are entitled to a 'universal' **free** school meal everyday.

Children in Years 3-6 are charged at **£3.20** per day.

Week 1	Monday	Tuesday	Wednesday	Thursday	Friday
Option 1	Macaroni Cheese	Beef Burger	Fish Fingers	BBQ Chicken Pizza	Christmas Dinner - Turkey
Option 2	Cheesy Bean Burrito	Quorn Burger	Veggie Fingers	Cheese Pizza	Roasted Veggie Slice
Dessert	Flapjack	Apple Crumble	Brownie	Jelly	Festive Chocolate and Ginger Cake Festive Shortbread

Poetry Corner

Why do the bells of Christmas ring?

Why do the bells of Christmas ring?
 Why do little children sing?
 Once a lovely shining star,
 Seen by shepherds from afar,
 Gently moved until its light
 Made a manger's cradle bright.
 There a darling baby lay,
 Pillowed soft upon the hay;
 And its mother sung and smiled:
 This is Christ, the holy Child!
 Therefore bells for Christmas ring,
 Therefore little children sing.

by Eugene Field

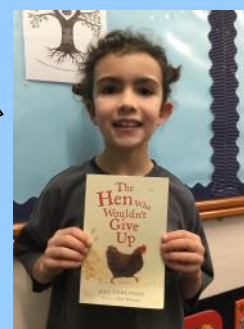


Reading Recommendations

Each week we will include a book recommendation from a child and/or adult.

This week, Martha recommends the Jill Tomlinson animal series.

I recommend these books because they are really sweet. The animals are funny and they go on fun adventures.



Safeguarding

If you have a concern about a child you can call the police on 999 if you feel they are at risk of immediate harm

You can contact the NSPCC:

Contact the NSPCC Helpline

If you have any concerns at all about a child's safety or wellbeing, don't hesitate to contact us.

Call us or email help@nspcc.org.uk

0808 800 5000

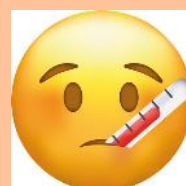
Find out more

Or call children's services 0300 300 0117

Attendance Matters!

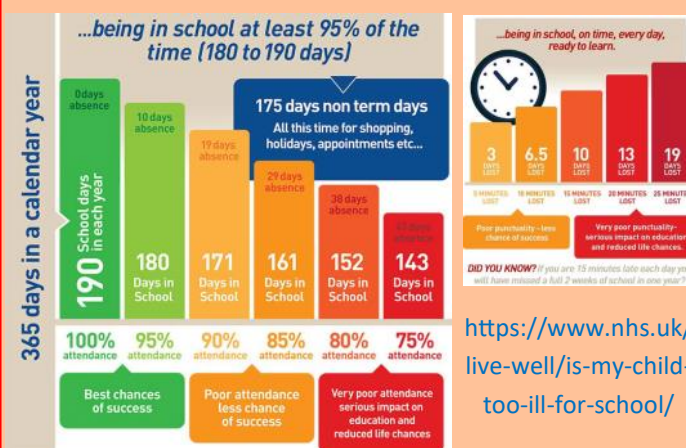
Week Commencing 9th December 2024

Whole School attendance target: 96.5%



Actual Attendance: 81.18%

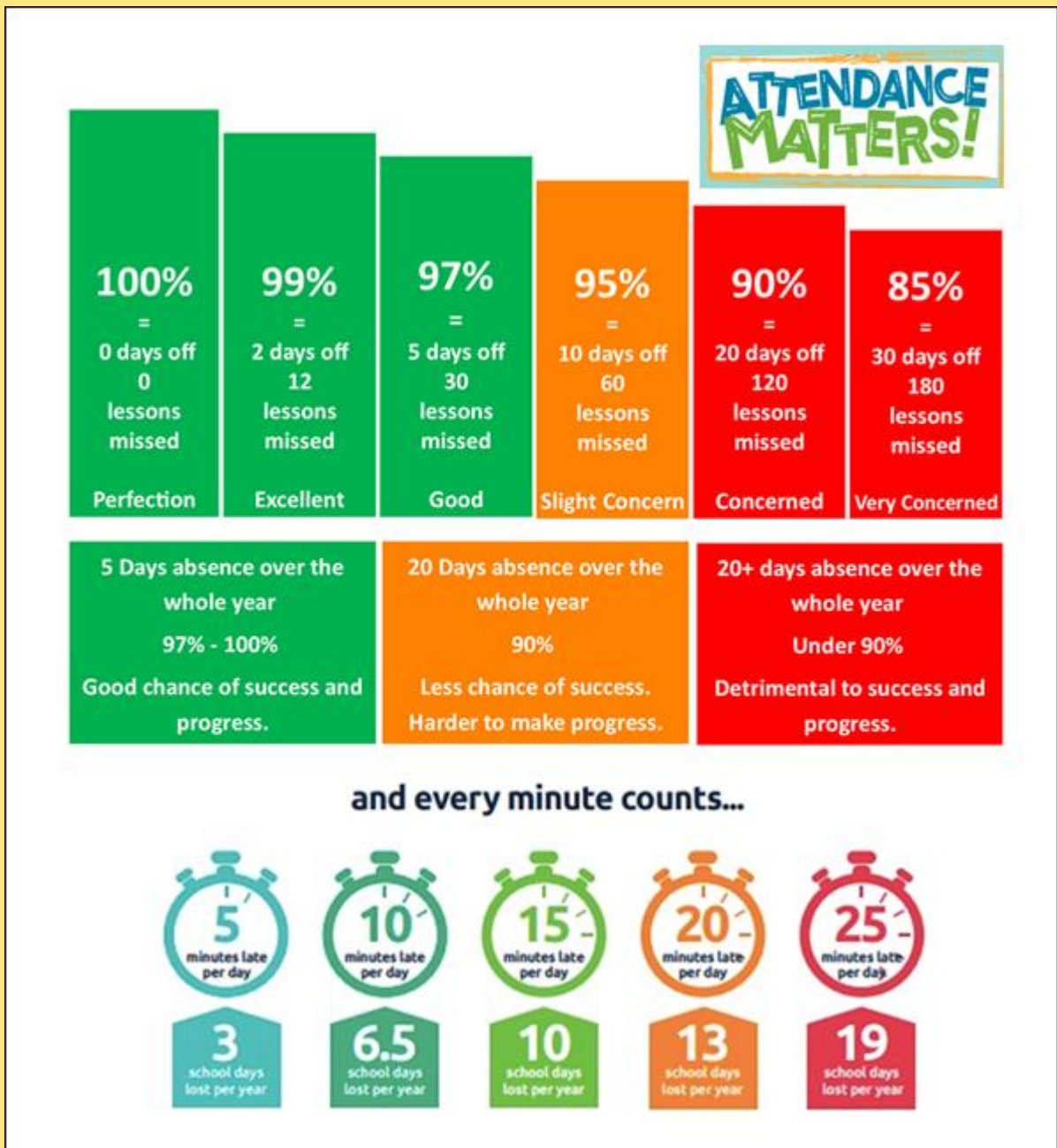
Late marks this week: 3



Golden Book

Bumble Bee	Ralph for showing excellent learning behaviours in every lesson! <i>Love</i> Bram for demonstrating sensible choices in the classroom. <i>Love</i>
Honey Bee	Bethan for working very hard in English, when using coordinating conjunctions. <i>Love</i> Alyssa for creating the most amazing pneumatic toy in DT and showing an excellent love for learning. <i>Love</i>
Ivy Bee	Fred C and Tom C - Even though learning can be tricky from time to time, they have such a positive outlook and continually strive to work hard and do their best. <i>Courage</i>
Sports Bee	Arthur G for fantastic focus and effort in PE. <i>Love</i>
Behaviour Bee	Hugh for showing beautiful compassion to a friend when they were feeling really sad. <i>Love</i>





At Brighstone Primary School we have high expectations for our children. This begins with attendance and punctuality as they are important life skills to learn.

Good school attendance habits are best started early. Children learn from those around them and you as parents/carers set the standards and expectations for your child. Lateness has a negative impact; being late may disrupt already settled children and lessons, affect achievement and embarrass, worry or upset your child. We understand that there may be an occasional unavoidable instance where you are late, but if it happens frequently, please let us know if there may be something that we can do to help.

What to do if your child is unwell:

Check the NHS Guidance: <https://www.nhs.uk/live-well/is-my-child-too-ill-for-school/>

You should notify the school office before 9am every morning your child is unable to attend due to illness. You can either telephone on 740285 or email on office@brighstoneprimary.org.uk. Telephone calls must be followed up in writing to authorise the (illness) absence.




Thank you!

Together we have raised

£294.31



Brighstone Church of England Aided
Primary School

 **Completed!**

**Christmas Prize Draw
Raffle Tickets
1 week left to buy tickets!**

Tickets sold until Friday 13th December
Draw takes place Saturday 14th December

Available from the School Office,
Brighstone Village Shop
& 1-2-1 Hairdressing Salon



BRIGHSTONE SCHOOL ASSOCIATION

PRE LOVED

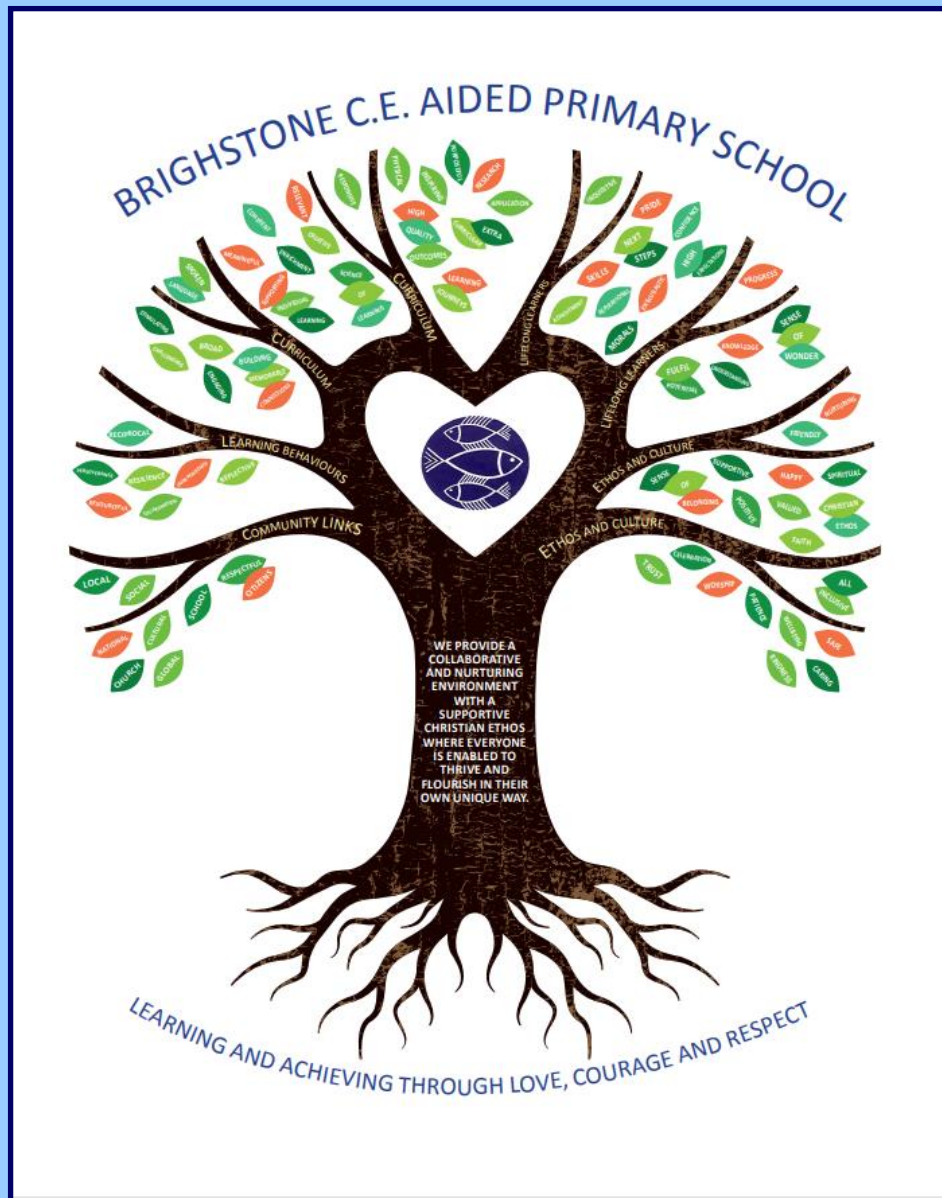
**CHRISTMAS
Jumper
SALE**

.....
If you have any good quality christmas jumpers that your kids have outgrown, please donate them for our rail.
.....

Place clean donations in the box in the school foyer.
.....

RAIL will be up from
25 NOVEMBER 2024

Our Vision Statement



A vision statement 'seeks to inspire and give direction to all stakeholders (staff, children, parents, governors and the wider community). It is an aspirational description of what an organisation would like to achieve or accomplish in the mid-term or long-term future. It is intended to serve as a clear guide for choosing current and future courses of action'.

Our vision statement works alongside our mission statement 'Learning and Achieving Through Love, Courage and Respect', which includes our values, to reflect and guide our culture, ethos and decision making. This is also on our website.

As a school, in 2020 we worked together with a range of stakeholders to write our vision statement, and we decided to create a visual vision statement to make it stand out and be memorable. Each part of the image has been carefully chosen to represent our school:

Our values, as part of the mission statement (tagline), are the roots and foundation that feed and nourish our school.

The vision statement is the main body (trunk) that guides all our actions.

The branches reflect the different aspects of life in our school.

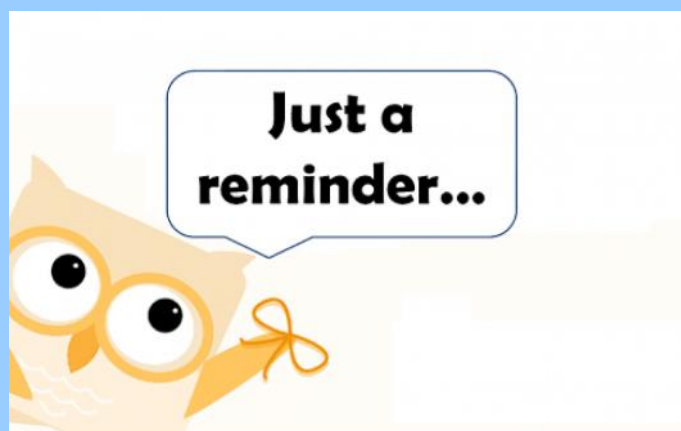
The leaves show examples of how these aspects are shown.

The school logo in the centre of the tree represents the Christian ethos that is at the heart of everything we do.

Reminders

- All hair accessories, socks, shoes and trainers must be in the school colours: navy blue, grey, black or white (no novelty socks)
- All long hair must be tied back (pony tail, bun, plaits etc...) to avoid the spreading of headlice
- No jewellery to be worn other than stud earrings, which must be removed or taped over on PE days
- Gates open at 8.25am and are locked at 8.30am, and in the afternoon, gates are opened at 2.55pm and locked at 3.10pm
- As teachers are busy welcoming and supervising children first thing in the morning, please could all messages be given to Mrs Pelosi in the office, who will then pass them on to the teacher
- Only **water** is allowed in drinks bottles, and snacks must be fruit only

Thank you!





Respect Charter

at Brighstone CE Aided Primary School

At Brighstone CE Aided Primary School we believe staff, parents and children are entitled to a safe and protective environment in which to learn and work. We strive to ensure that our school offers a warm and nurturing environment. All members of the school community and visitors should demonstrate mutual respect, to feel safe, work together and to use restorative approaches as the foundation of our practice. Any behaviour that may lead to feelings of harassment, alarm or distress to members of our community, will not be tolerated and action taken.

Expectations

- o That all adults set a good example to children at all times, showing them how to get along with all members of the school and the wider community.
- o That no one - staff, governors, parents, carers, volunteers or children - be subjected to abusive behaviour or any form of threats from visitors on the school premises.
- o That physical attacks and threatening behaviour, abusive or insulting language verbal or written (including on social media), to staff, governors, parents, carers, volunteers, children and other users of the school premises will not be tolerated and may lead to a ban from school premises and/or police action.

Types of behaviour that are considered serious and unacceptable

This is not an exhaustive list but seeks to provide illustrations of such behaviour:

- o Shouting, either in person or over the telephone
- o Speaking in an aggressive/threatening tone
- o Physically intimidating , e.g. standing very close
- o The use of aggressive hand gestures/exaggerated movements
- o Physical threats
- o Shaking or holding a fist towards another person
- o Swearing and name calling
- o Pushing
- o Slapping, punching, hitting or kicking
- o Racist, homophobic or other hateful behaviour
- o Sexist comments or sexual innuendo
- o Disrespecting religion or belief
- o Inappropriate communications (posting on Social Networking sites, emails or letters, etc.) which could bring the school into disrepute or be deemed as bullying, harassment and/or a hate-related

The school reserves the right to take any necessary actions to ensure that members of the school community are not subjected to any form of abuse in line with policy and procedure. If you choose to engage in these behaviours you may be asked to leave the site or the police may be called.

Thank you for your understanding and support

If your message is **urgent** or about **attendance** contact Mrs Pelosi in the **office**:
01983 740285
office@brighstoneprimary.org.uk
Office Hours 8am - 4pm

If you would like to speak with the **Headteacher** Mrs Lennon, you can find her at the school gate every morning or you can call 740285 to make an appointment with her



For **general enquiries** you can call or email the office, text the school messaging service or send a message to our school **Facebook** page: <https://www.facebook.com/BrighstoneCEPrimarySchool>
Our Facebook page is open so you do not need a personal account to view it

If you have concerns about your child's **learning** and progress, email the class teacher in the first instance and allow at least 1 working day for a reply:

Years R, 1 & 2 - teacher.bumblebee@brighstoneprimary.org.uk
Years 3 & 4 - teacher.honeybee@brighstoneprimary.org.uk
Years 5 & 6 - teacher.ivybee@brighstoneprimary.org.uk

If you have concern regarding **safeguarding** or your **child's mental health and wellbeing** please contact Mrs Jones. You can speak to her on the playground every morning, call into the school office or email m.jones@brighstoneprimary.org.uk
safeguarding@brighstoneprimary.org.uk

Our **Newsletter** is published every Friday with key information for parents and carers. You can find it on our school website: <https://www.brighstoneprimary.org.uk/category/the-buzz/>

Contact us



If you have a safeguarding concern about a child outside of school hours you can call the police on 999 if you feel they are at risk of immediate harm or contact Children's Services on 0300 300 0117

Please be reminded that all children need to wear the correct PE kit on PE days.
The correct PE kit is also needed for sports clubs.
Socks and hair accessories must be in the school colours.

School Day Timings

The school day is as follows:

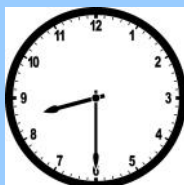
8.25am: Gates open

8.30am: School starts

3pm: School ends

3.10pm: Gates close

Many thanks.



Key dates this year

- Monday 16th December: BSA Secret Present Room
- Wednesday 18th December: Christingle Service 1.30pm
- Thursday 19th December: Christmas Jumper Day; Christmas Carol Concert 1.30pm and 6pm
- Friday 20th December: Last day of term; Christmas Dinner Day; Mini Musical Soiree for children who have music lessons
- Monday 6th January: Back to school
- Wednesday 15th January: Deadline for primary applications
- Monday 10th February: KS2 trip to Harry Potter World
- Friday 14th February: Last day of term
- Monday 24th February: Back to school
- Monday 3rd March: National offer day for secondary admissions
- Tuesday 18th and Wednesday 19th March: Parents evenings
- Friday 4th April: Last day of term
- Wednesday 16th April: National offer day for primary admissions
- Tuesday 22nd April: Back to school
- W/c Monday 12th May: Y6 SATs week
- Friday 23rd May: Last day of term
- Tuesday 3rd June: Back to school
- Tuesday 15th July: Parents evening
- Friday 25th July: Last day of term

This list is regularly updated.

School Term Dates for 2024-2025

Please note that the school will be closed on the following days in this academic year:

Day 1: Monday 2nd September 2024

Day 2: Tuesday 3rd September 2024

Day 3: Monday 2nd June 2025

Day 4: Monday 28th July 2025

Day 5: Tuesday 29th July 2025

Term dates are available on our school website.

