

The Buzz

6th December 2024



Brighstone C.E.
Primary School



Learning and Achieving
Through Love, Courage
and Respect



Dear parents, carers and children,



Well, what an amazing day at the **Dick Whittington pantomime** we had today. Oh no, we didn't! Oh yes, we did! Everyone had a fantastic time, and it was a delight to see everyone's excited faces as they joined in with the songs, dancing, and silly actions and laughed at the jokes (luckily, some of them went over the children's heads...). We were all marvelling at how the turtle with the dame on its back was swimming through the air, and everyone loved getting squirted with water.

Here are some of the children's comments: "I loved the bit with the five toilet rolls!" (Iris) "I really liked it when they squirted us with water." (Martha) "My favourite was when the dame wore her bikini." (Sam) "I liked the light saber battle." (Theo F and Leland) "It was the best thing I've ever seen." (Oscar S) "I liked it when they said there wasn't a gorilla, but there was." (Austin) "My favourite part was when the gorilla came out and chased the pirate." (Arthur G)



On Wednesday evening, our **head pupils, Tom and Poppy L**, did us proud. They were local celebrities, having been asked by Rev Jackie to turn on the lights at the Christmas Tree Festival. They were honoured to do this, and they were a credit to Brighstone School.



All of our children have made decorations for as part of the **Brighstone Christmas Tree** to reflect our school logo of the Christian fish range of ways. Some are hanging on our tree



our school tree displayed in St Mary's Church **Festival**. The BSA kindly provided wooden fish, symbol. The children have decorated these in a in St Mary's Church, and some are hanging on



the Christmas Tree in the school hall. Some of our children also made a fish paper lantern for the display at Mottistone church. Please do go and visit the Festival at the various different venues if you can; all the trees are beautiful to see, and so creative.

Tomorrow sees the **BSA Christmas Fayre**, held in school 1pm - 4pm. There will be a range of local craftspeople selling their wares, just in time for you to buy your Christmas gifts! There will also be a creative craft table for children, as well refreshments. Shoppers will be treated to a performance by our school choir as well. We look forward to seeing you!

Our wonderful **Christmas Choir** have been in demand this year! They performed at the Isle of Wight Pearl on Sunday 1st December to a full cafe of friends, family and visitors. Lots of positive feedback was received with some noting it was their best year yet! On Wednesday this week the choir performed at Brighstone Grange; this is always really special as the children bring so much joy to the residents. There is still time to see the choir perform as on Saturday 7th they will be at Mottistone Church from 10:30am and the BSA Christmas Fayre at school from 2:30pm then their last performance this season will be on Sunday evening at St Mary's Church from 7pm for the Stars of Wonder concert. Everyone is welcome to all events.



I hope you have a lovely weekend,

With best wishes,

Mrs Lennon and the Brighstone Team



Collective Worship

This week's focus was 'Compassion - Coming to the Rescue'.

We heard one of Jesus' stories: The Lost Sheep. We discussed how we would care for every sheep, and go to find the lost one even if we had 99 others.

Two children then acted out a story of 'The Lost Child' with the puppets Barney and Bella.

How does it make you feel when you see someone who is upset or lost or fed up?



What does the Bible say about coming to the rescue?



How can you show compassion when you see others looking lost, upset or lonely?
How can you come to the rescue?

Thank you prayer

God of compassion,
You care for us more than we could ever care for anyone.

Thank you that you sent Jesus, the Good Shepherd, to bring us back to you.

Thank you that you come and find us whenever we feel lost or alone.

Amen

(You will have noticed that our colour has changed to purple, which is the colour for Advent, demonstrating the anticipation of the coming King.)



School Dinners

Children in **Year R, 1 and 2** are entitled to a 'universal' **free** school meal everyday.

Children in Years 3-6 are charged at **£3.20** per day.

Week 3	Monday	Tuesday	Wednesday	Thursday	Friday
Option 1	Pizza	Bangers and Mash	Roast Chicken	Chicken Curry	Fish Fingers
Option 2	BBQ Quorn Fillet	Quorn Sausages	Veggie Slice	Veggie Pasta	Omelette
Dessert	Brownie with Fruit	Bread & Butter Pudding	Cookie	Shortbread	Ice Cream

Poetry Corner

Parade

Christmas is for giving
And for showing that we care,
For honoring the Christ Child
With the loving gifts we share.
The wise men gave of riches;
The shepherds, faith and love.
Each gift, in its own measure,
Was smiled on from above.

- Iris W. Bray

Reading Recommendations

Each week we will include a book recommendation from a child and/or adult.

This week, Mrs Jones recommends "Ultra Processed People".

I recommend this book because it really makes you think about what you are eating. It explains the science behind why we eat so much of certain foods and what it does to our brains, and our physical and mental health.



Safeguarding

If you have a concern about a child you can call the police on 999 if you feel they are at risk of immediate harm

You can contact the NSPCC:

Contact the NSPCC Helpline

If you have any concerns at all about a child's safety or wellbeing, don't hesitate to contact us.

Call us or email help@nspcc.org.uk

0808 800 5000

[Find out more](#)

Or call children's services 0300 300 0117

Attendance Matters!

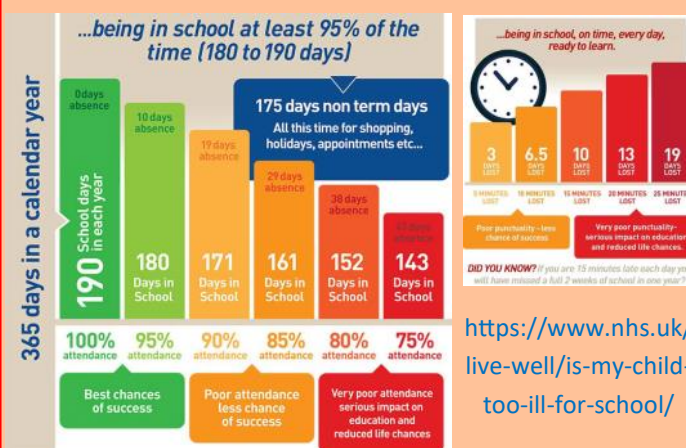
Week Commencing 2nd December 2024

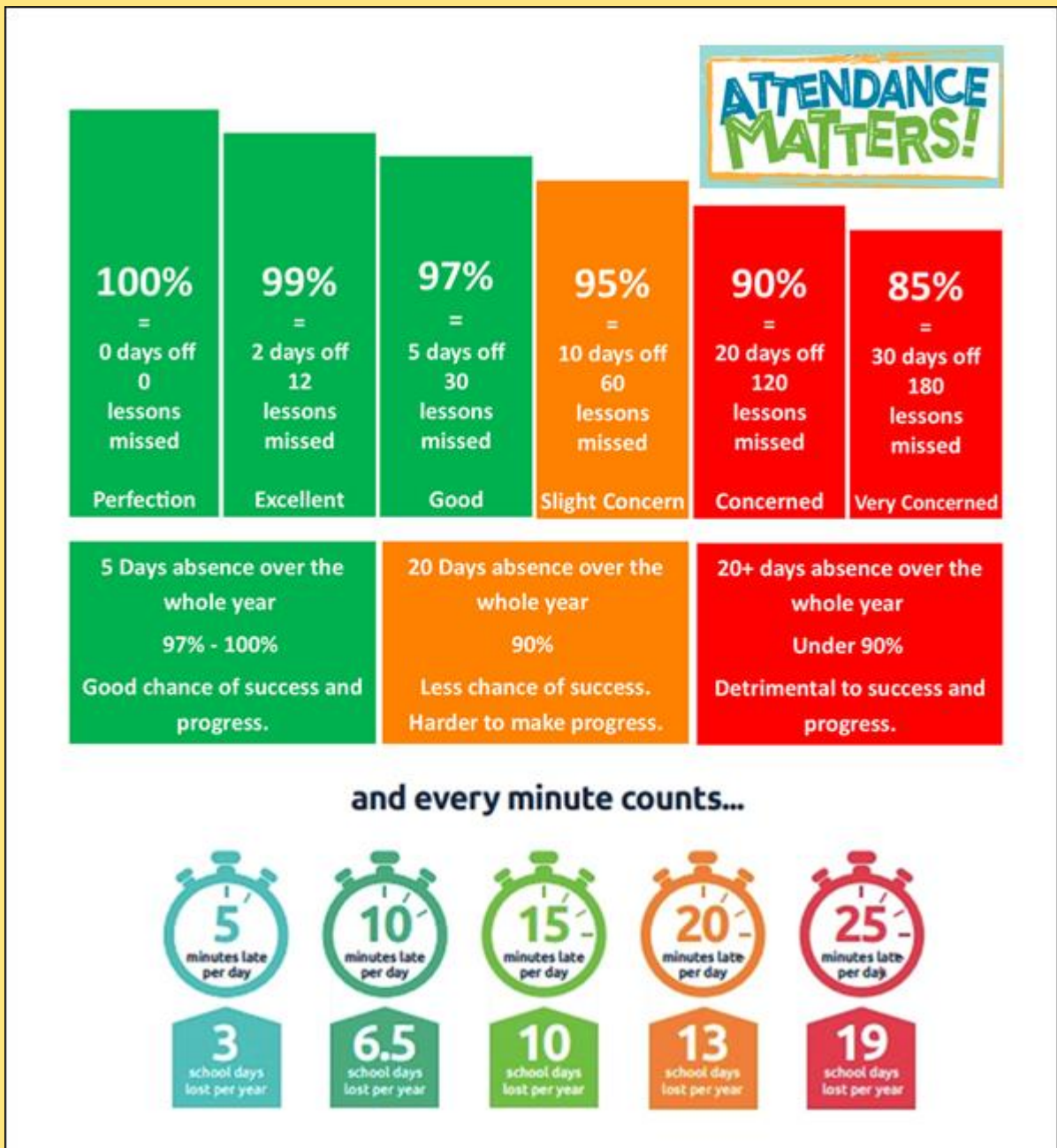
Whole School attendance target: 96.5%



Actual Attendance: 91.18%

Late marks this week: 8





At Brighstone Primary School we have high expectations for our children. This begins with attendance and punctuality as they are important life skills to learn.

With an increase in late marks we wanted to remind everyone of the importance of attendance and punctuality: good school attendance habits are best started early. Children learn from those around them and you as parents/carers set the standards and expectations for your child. Lateness has a negative impact; being late may disrupt already settled children and lessons, affect achievement and embarrass, worry or upset your child. We understand that there may be an occasional unavoidable instance where you are late, but if it happens frequently, please let us know if there may be something that we can do to help.

What to do if your child is unwell:

Check the NHS Guidance: <https://www.nhs.uk/live-well/is-my-child-too-ill-for-school/>

You should notify the school office before 9am every morning your child is unable to attend due to illness. You can either telephone on 740285 or email on office@brighstoneprimary.org.uk. Telephone calls must be followed up in writing to authorise the (illness) absence.



Brighstone School Association's
Christmas Fayre
Saturday 7th December
13:00 - 16:00
at Brighstone Primary School
Tea, Coffee and Refreshments,
Childrens Craft Area, Local Island
Crafts and Handmade Gifts & Wreath
Making.

Christmas Prize Draw
Raffle Tickets
1 week left to buy tickets!
Tickets sold until Friday 13th December
Draw takes place Saturday 14th December
Available from the School Office,
Brighstone Village Shop
& 1-2-1 Hairdressing Salon

BRIGHSTONE SCHOOL ASSOCIATION
PRE LOVED
CHRISTMAS
Jumper
SALE
If you have any good quality christmas jumpers that your kids have outgrown, please donate them for our rail.
Place clean donations in the box in the school foyer.
RAIL will be up from 25 NOVEMBER 2024



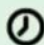
Thank you!

Together we have raised

£294.31



Brighstone Church of England Aided
Primary School

 **Completed!**

Brighstone School Association

Rainbow Raffle
Mufti Day

Friday 13th December

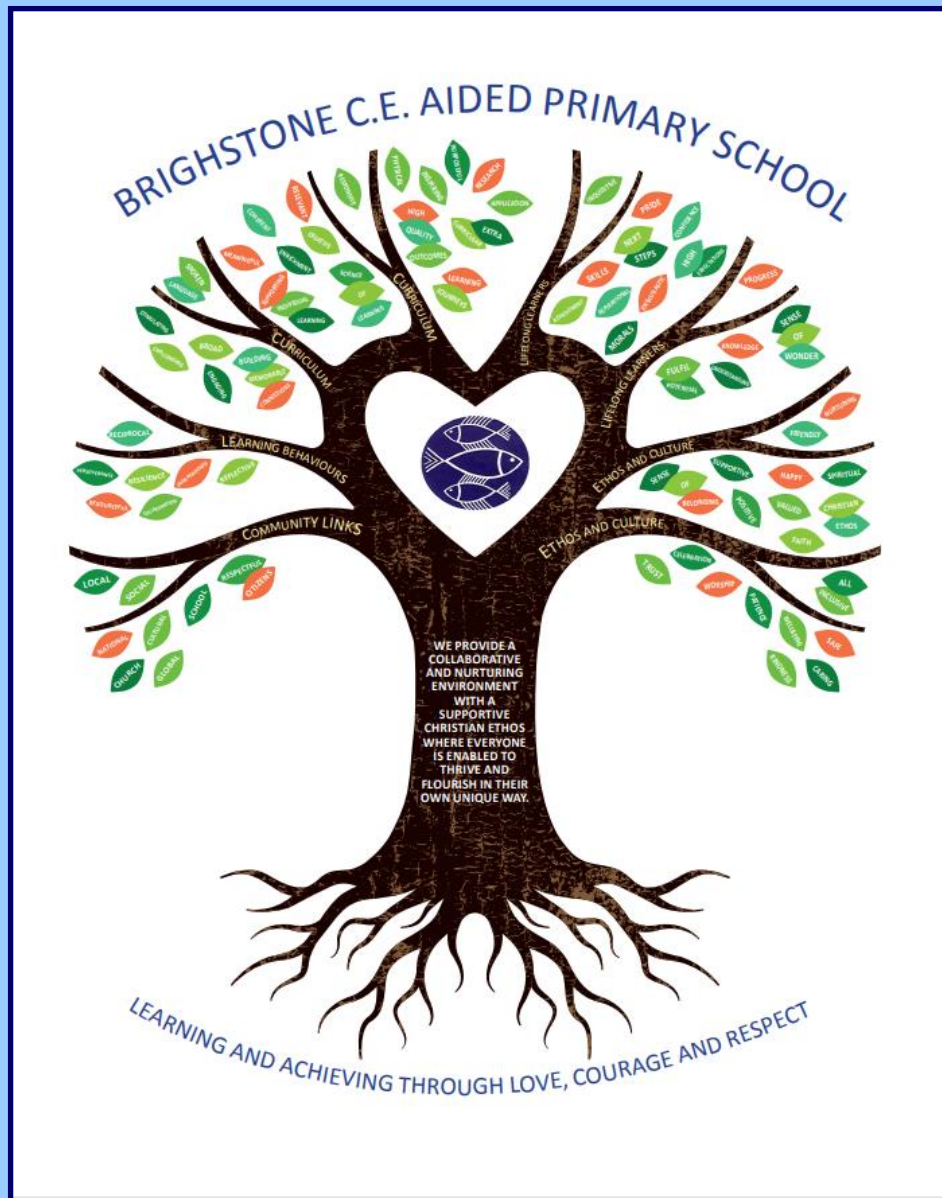
This mufti day we are asking each child to bring in a raffle prize relating to their year groups colour as shown below and in return they can wear any PE suitable non uniform for the day! These items will be part of the Christmas Prize Draw Raffle.



Need Ideas?...

Chocolates, craft items/kits, bath products, gardening equipment, sweets, perfume, alcohol, mince pies/christmas cake, fluffy socks, pringles, christmas novelty headwear, non alcoholic drink, hats gloves, marshmallows, biscuits, wine crackers, jams/chutneys, eye mask, childrens toy/books, savoury biscuits, dried fruit, pamper products, mulled wine, hand creams

Our Vision Statement



A vision statement 'seeks to inspire and give direction to all stakeholders (staff, children, parents, governors and the wider community). It is an aspirational description of what an organisation would like to achieve or accomplish in the mid-term or long-term future. It is intended to serve as a clear guide for choosing current and future courses of action'.

Our vision statement works alongside our mission statement 'Learning and Achieving Through Love, Courage and Respect', which includes our values, to reflect and guide our culture, ethos and decision making. This is also on our website.

As a school, in 2020 we worked together with a range of stakeholders to write our vision statement, and we decided to create a visual vision statement to make it stand out and be memorable. Each part of the image has been carefully chosen to represent our school:

Our values, as part of the mission statement (tagline), are the roots and foundation that feed and nourish our school.

The vision statement is the main body (trunk) that guides all our actions.

The branches reflect the different aspects of life in our school.

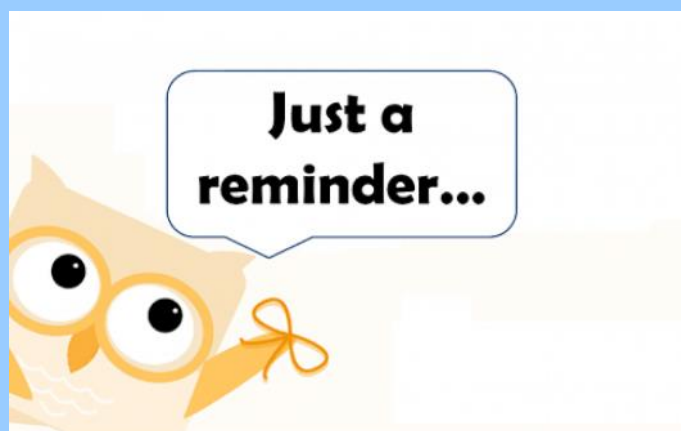
The leaves show examples of how these aspects are shown.

The school logo in the centre of the tree represents the Christian ethos that is at the heart of everything we do.

Reminders

- All hair accessories, socks, shoes and trainers must be in the school colours: navy blue, grey, black or white (no novelty socks)
- All long hair must be tied back (pony tail, bun, plaits etc...) to avoid the spreading of headlice
- No jewellery to be worn other than stud earrings, which must be removed or taped over on PE days
- Gates open at 8.25am and are locked at 8.30am, and in the afternoon, gates are opened at 2.55pm and locked at 3.10pm
- As teachers are busy welcoming and supervising children first thing in the morning, please could all messages be given to Mrs Pelosi in the office, who will then pass them on to the teacher
- Only **water** is allowed in drinks bottles, and snacks must be fruit only

Thank you!





Respect Charter

at Brighstone CE Aided Primary School

At Brighstone CE Aided Primary School we believe staff, parents and children are entitled to a safe and protective environment in which to learn and work. We strive to ensure that our school offers a warm and nurturing environment. All members of the school community and visitors should demonstrate mutual respect, to feel safe, work together and to use restorative approaches as the foundation of our practice. Any behaviour that may lead to feelings of harassment, alarm or distress to members of our community, will not be tolerated and action taken.

Expectations

- o That all adults set a good example to children at all times, showing them how to get along with all members of the school and the wider community.
- o That no one - staff, governors, parents, carers, volunteers or children - be subjected to abusive behaviour or any form of threats from visitors on the school premises.
- o That physical attacks and threatening behaviour, abusive or insulting language verbal or written (including on social media), to staff, governors, parents, carers, volunteers, children and other users of the school premises will not be tolerated and may lead to a ban from school premises and/or police action.

Types of behaviour that are considered serious and unacceptable

This is not an exhaustive list but seeks to provide illustrations of such behaviour:

- o Shouting, either in person or over the telephone
- o Speaking in an aggressive/threatening tone
- o Physically intimidating, e.g. standing very close
- o The use of aggressive hand gestures/exaggerated movements
- o Physical threats
- o Shaking or holding a fist towards another person
- o Swearing and name calling
- o Pushing
- o Slapping, punching, hitting or kicking
- o Racist, homophobic or other hateful behaviour
- o Sexist comments or sexual innuendo
- o Disrespecting religion or belief
- o Inappropriate communications (posting on Social Networking sites, emails or letters, etc.) which could bring the school into disrepute or be deemed as bullying, harassment and/or a hate-related

The school reserves the right to take any necessary actions to ensure that members of the school community are not subjected to any form of abuse in line with policy and procedure. If you choose to engage in these behaviours you may be asked to leave the site or the police may be called.

Thank you for your understanding and support

If your message is **urgent** or about **attendance** contact Mrs Pelosi in the **office**:
01983 740285
office@brighstoneprimary.org.uk
Office Hours 8am - 4pm

If you would like to speak with the **Headteacher** Mrs Lennon, you can find her at the school gate every morning or you can call 740285 to make an appointment with her



For **general enquiries** you can call or email the office, text the school messaging service or send a message to our school **Facebook** page: <https://www.facebook.com/BrighstoneCEPrimarySchool>
Our Facebook page is open so you do not need a personal account to view it

If you have concerns about your child's **learning** and progress, email the class teacher in the first instance and allow at least 1 working day for a reply:

Years R, 1 & 2 - teacher.bumblebee@brighstoneprimary.org.uk
Years 3 & 4 - teacher.honeybee@brighstoneprimary.org.uk
Years 5 & 6 - teacher.ivybee@brighstoneprimary.org.uk

If you have concern regarding **safeguarding** or your **child's mental health and wellbeing** please contact Mrs Jones. You can speak to her on the playground every morning, call into the school office or email m.jones@brighstoneprimary.org.uk
safeguarding@brighstoneprimary.org.uk

Our **Newsletter** is published every Friday with key information for parents and carers. You can find it on our school website: <https://www.brighstoneprimary.org.uk/category/the-buzz/>

Contact us



If you have a safeguarding concern about a child outside of school hours you can call the police on 999 if you feel they are at risk of immediate harm or contact Children's Services on 0300 300 0117

Please be reminded that all children need to wear the correct PE kit on PE days.
The correct PE kit is also needed for sports clubs.
Socks and hair accessories must be in the school colours.

School Day Timings

The school day is as follows:

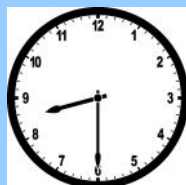
8.25am: Gates open

8.30am: School starts

3pm: School ends

3.10pm: Gates close

Many thanks.



Key dates this year

- Friday 6th December: Whole school visit to the pantomime in Portsmouth
- Saturday 7th December: BSA Christmas Fair 1pm - 4pm
- Sunday 8th December: Stars of Wonder Concert in St Mary's Church
- Friday 13th December: Mufti-Day for BSA hampers
- Wednesday 18th December: Christingle Service 1.30pm
- Thursday 19th December: Christmas Jumper Day; Christmas Carol Concert 1.30pm and 6pm
- Friday 20th December: Last day of term; Christmas Dinner Day
- Monday 6th January: Back to school
- Wednesday 15th January: Deadline for primary applications
- Monday 10th February: KS2 trip to Harry Potter World
- Friday 14th February: Last day of term
- Monday 24th February: Back to school
- Monday 3rd March: National offer day for secondary admissions
- Tuesday 18th and Wednesday 19th March: Parents evenings
- Friday 4th April: Last day of term
- Wednesday 16th April: National offer day for primary admissions
- Tuesday 22nd April: Back to school
- W/c Monday 12th May: Y6 SATs week
- Friday 23rd May: Last day of term
- Tuesday 3rd June: Back to school
- Tuesday 15th July: Parents evening
- Friday 25th July: Last day of term

This list is regularly updated.

School Term Dates for 2024-2025

Please note that the school will be closed on the following days in this academic year:

Day 1: Monday 2nd September 2024

Day 2: Tuesday 3rd September 2024

Day 3: Monday 2nd June 2025

Day 4: Monday 28th July 2025

Day 5: Tuesday 29th July 2025

Term dates are available on our school website.

