

# The Buzz



14th February 2025



Learning and Achieving Through  
Love, Courage and Respect

Dear parents, carers and children,

What an amazing day KS2 had on Monday at **Warner Bros Studios**. As we were walking around looking at the Harry Potter sets, costumes and special effects, it was lovely to see the children making the links to the books and the films. We certainly have some experts! We enjoyed a 'Costume Distressing' workshop, where we learnt about how they made all the costumes look authentic for all the different scenes. We saw real costumes that were actually used in the films. Did you know that there were 60 different versions of Harry's jacket in the battle scene in the final film, all with different levels of distressing to show the progress through the battle?



On Monday, **Bumble Bee class** also had a fun day too! They had a visitor called Jim who had landed from his planet. Unfortunately, he didn't know how to get home, but the children were all busy inventing spaceships and making him feel welcome. Jim only liked bananas so they baked banana muffins. The small world became a space port. The DT hub became a rocket building site. They had some meditation time, drifting in space and looking at the lights and they did sensory circuits in PE.



We are delighted to announce the wonderful news that **Miss Pelosi** had a gorgeous baby girl last weekend. Huge congratulations to the family, and we can't wait to have cuddles!

We said 'a bientot' to **Mrs Baker** today, who is going on maternity leave. We wish her all the very best, and we look forward to seeing her little bundle of joy!

The BSA held the second annual **family quiz night** last Friday in the Wilberforce Hall, which pitched 13 family groups against each other, all brought together by the brilliant quiz master Larni (Max's mum) who hosted the evening. The evening raised approximately £180, which is fantastic! See p6 of this Buzz to read a thank you from Richard (chair).

The children had a great time at the **end-of-term disco** today. There are some fantastic dancers! Thank you to the BSA and staff for organising and supervising this.



**A reminder:** Whilst it is lovely to see so many children (and parents) taking the healthier and more eco-friendly approach to school travel by cycling and scooting to school, please can we remind everyone that once they are on school grounds, then the expectation is that they dismount and push their bike/scooter until they either reach the bike racks or the school gates upon exiting. This is for the safety of our whole school community. Thank you.

I hope you have a lovely half term.

With best wishes,

Mrs Lennon and the Brighstone team



## Collective Worship

This week, we been focusing on Courage: Encouraging Others

We found out that the root of the word courage is cor – the Latin word for heart. The word 'courage' can be found in two other words:

encourage

discourage

When have you been encouraged by someone else? When have you been discouraged by someone else? How did you feel?

Sometimes it might feel that everyone is against us and everything is going wrong. These are times when our friends need to build us up and encourage us.

If you saw your friend feeling down and discouraged, how would you cheer them up? What could you say to them?



Dear Lord,  
Help us to find ways to encourage other people that we are working with.  
Help us to remember how it feels to be discouraged  
And to try to have the courage to build other people up.  
Amen



'Perfect love casts out all fear'  
1 John 4.18

## School Dinners

Children in **Year R, 1 and 2** are entitled to a 'universal' **free** school meal everyday.

Children in Years 3-6 are charged at **£3.20** per day. Yoghurt, fruit, salad and jacket potatoes are available every day.

Week 2	Monday	Tuesday	Wednesday	Thursday	Friday
Option 1	Veggie Pizza	Beef Bolognese	Roast Pork	Chicken Pie	Chicken Burger
Option 2	Veggie Fajita	Chinese Veg Noodles	Veggie Hotpot	Macaroni Cheese	Quorn Dippers
Dessert	Chocolate Mousse	Sponge and Custard	Jelly	Cookie	Glazed Sponge

### Poetry Corner

#### Furry Bear

If I were a bear,  
And a big bear too,  
I shouldn't much care  
If it froze or snow;  
I shouldn't much mind  
If it snowed or frizz -  
I'd be all fur-lined  
With a coat like his!



For I'd have fur boots and a brown fur wrap,  
And brown fur knickers and a big fur cap.  
I'd have a fur muffle-ruff to cover my jaws,  
And brown fur mittens on my big brown paws.  
With a big brown furry-down up to my head,  
I'd sleep all the winter in a big fur bed.

A A Milne

### Reading Recommendations

Each week, we include a book recommendation from a child and/or adult.

This week, William recommends **Unbelievable Football** by Matt Oldfield.

I recommend this book because I love doing sports and football is a good game. It has lots of incredible true football stories, including one in World War One when they played football together on Christmas Day.



### Safeguarding

If you have a concern about a child you can call the police on 999 if you feel they are at risk of immediate harm

You can contact the NSPCC:

#### **Contact the NSPCC Helpline**

If you have any concerns at all about a child's safety or wellbeing, don't hesitate to contact us.

Call us or email [help@nspcc.org.uk](mailto:help@nspcc.org.uk)

**0808 800 5000**

[Find out more](#)

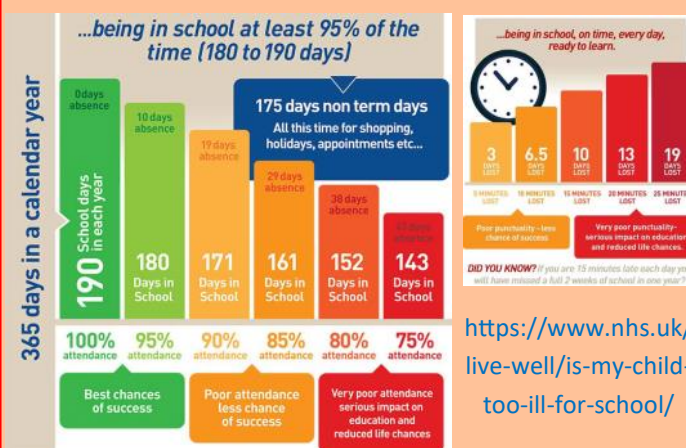
Or call children's services 0300 300 0117

### **Attendance Matters!**

Week Commencing 10th February 2025  
(Whole school attendance target: 96.5%)

Actual Attendance: 96.47%

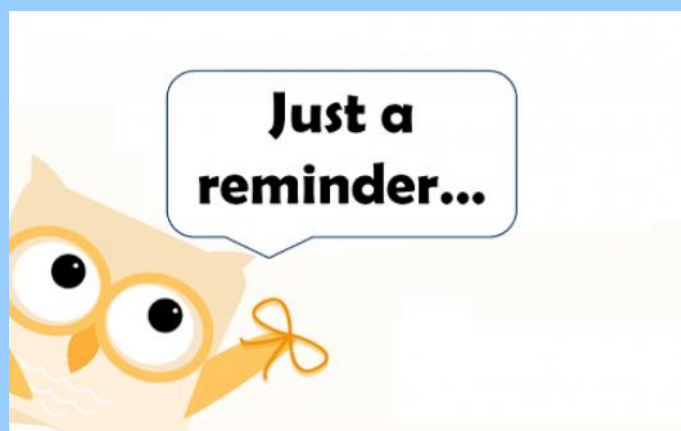
Late marks this week: 8

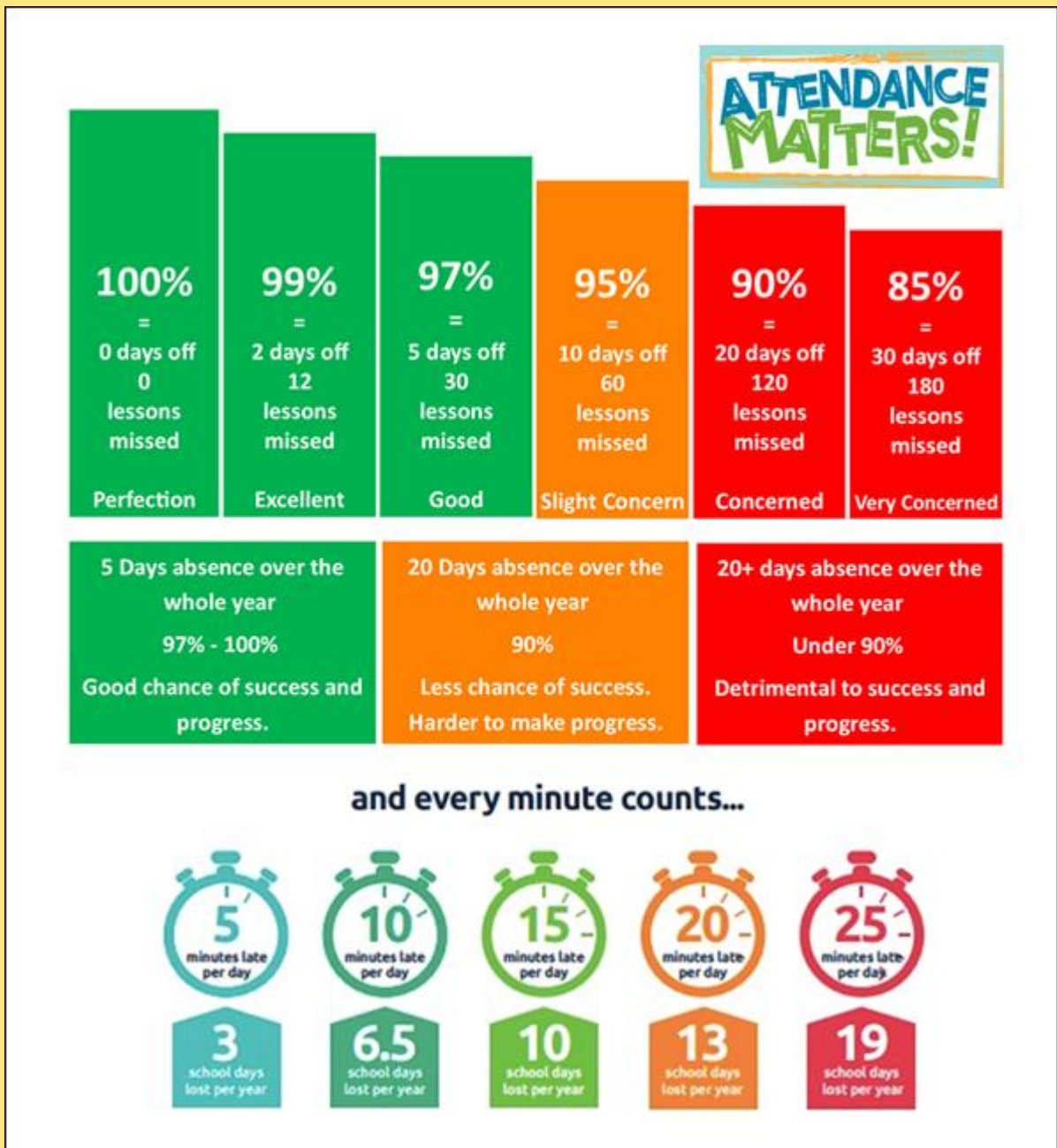


# Reminders

- PE Kit is navy blue top/jumper/hoodie with navy blue bottoms - **Branded items are not permitted**
- All hair accessories, socks, shoes and trainers must be in the school colours: navy blue, grey, black or white (no novelty socks)
- All long hair must be tied back (pony tail, bun, plaits etc...) to avoid the spreading of head lice
- No jewellery to be worn other than stud earrings, which must be removed or taped over on PE days
- Gates open at 8.25am and are locked at 8.30am, and in the afternoon, gates are opened at 2.55pm and locked at 3.10pm
- **As teachers are busy welcoming and supervising children first thing in the morning, please could all messages be given to Mrs Pelosi in the office, who will then pass them on to the teacher**
- Only **water** is allowed in drinks bottles, and snacks must be fruit only

Thank you!





At Brighstone Primary School we have high expectations for our children. This begins with attendance and punctuality as they are important life skills to learn.

Good school attendance habits are best started early. Children learn from those around them and you as parents/carers set the standards and expectations for your child. Lateness has a negative impact; being late may disrupt already settled children and lessons, affect achievement and embarrass, worry or upset your child. We understand that there may be an occasional unavoidable instance where you are late, but if it happens frequently, please let us know if there may be something that we can do to help.

What to do if your child is unwell:

Check the NHS Guidance: <https://www.nhs.uk/live-well/is-my-child-too-ill-for-school/>

You should notify the school office before 9am every morning your child is unable to attend due to illness. You can either telephone on 740285 or email on [office@brighstoneprimary.org.uk](mailto:office@brighstoneprimary.org.uk). Telephone calls must be followed up in writing to authorise the (illness) absence.



The BSA held the second annual family quiz night last Friday in the Wilberforce hall, which pitched 13 family groups against each other to see who was best able to answer questions from flags to TV programmes, from Pointless to Family Fortunes, all brought together by the brilliant quiz master Larni (Max's mum) who hosted the evening. The raffle was crammed with fantastic prizes that were donated on non uniform day. We managed to raise approximately £180 pounds to go into BSA funds to assist with school activities

Thank you to all who took part.

Richard (Chair)

## BSA ASTRA RECYCLING BIN

### **We take...**

Clothes  
Shoes  
Bed Linen  
Accessories  
(Such as belts, hats & handbags)  
Soft Toys

### **We can't take...**

Duvets or Cushions  
Off Cuts  
Carpet or Curtains



Find our recycling bin at the front entrance of the school.

*Parents,  
Family members  
& friends of Brighstone  
Primary School*

**Does your place of  
work offer the Match  
Funding Scheme?**

Get in touch with us if your employers could help our BSA fundraisers via email at [brighstoneschoolassoc@gmail.com](mailto:brighstoneschoolassoc@gmail.com)



On **Thursday 6th March**, we will be celebrating World Book Day.

Children can come to school in their PJs, snoodies, dressing gowns, etc... to enjoy snuggling up with a book in school.

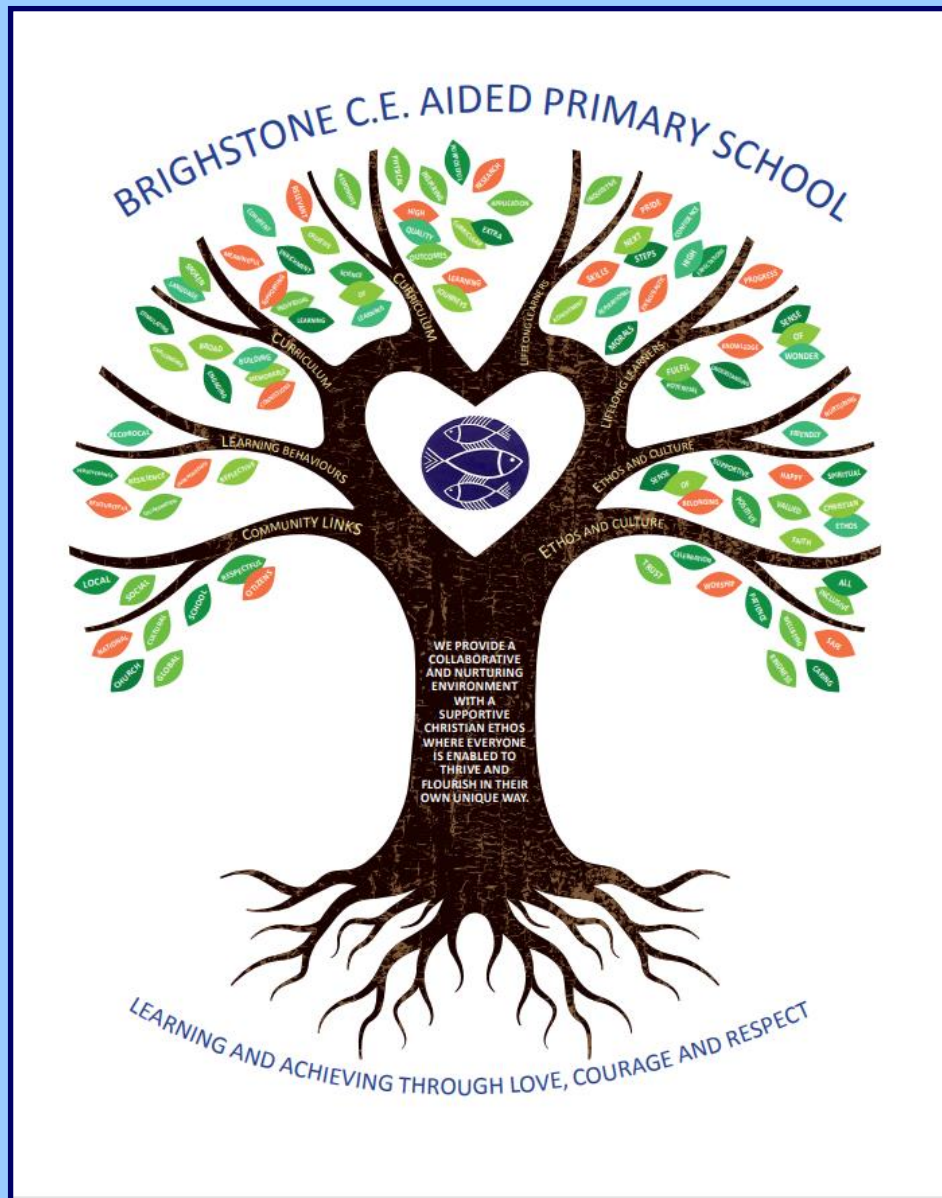
We will be enjoying a visit to the village library, taking part in a Hive Book Quiz, hearing stories read by pupils from Ivy Bee class, and lots more!

Children are also invited to take part in a Photo Challenge. As the theme is 'Read Your Way', children can take photos of themselves 'reading in their way' (e.g. up a tree, on the beach, in a hammock, with their pet, etc...) and email them to the school office for a display in school; we'd love to see them. The most creative win prizes from the Scholastic Book Fair (see below).

After half term, your child will bring home a World Book Day voucher to use in any participating bookshops.

During w/c 17th March, we will also be holding a **Scholastic Book Fair**, with lots of amazing books to choose from. Your WBD vouchers can also be redeemed against these, so you may wish to keep them until then. (And, because we don't need to collect them in, they have said that you can then use them again in another shop!).

# Our Vision Statement



A vision statement 'seeks to inspire and give direction to all stakeholders (staff, children, parents, governors and the wider community). It is an aspirational description of what an organisation would like to achieve or accomplish in the mid-term or long-term future. It is intended to serve as a clear guide for choosing current and future courses of action'.

Our vision statement works alongside our mission statement 'Learning and Achieving Through Love, Courage and Respect', which includes our values, to reflect and guide our culture, ethos and decision making. This is also on our website.

As a school, in 2020 we worked together with a range of stakeholders to write our vision statement, and we decided to create a visual vision statement to make it stand out and be memorable. Each part of the image has been carefully chosen to represent our school:

Our values, as part of the mission statement (tagline), are the roots and foundation that feed and nourish our school.

The vision statement is the main body (trunk) that guides all our actions.

The branches reflect the different aspects of life in our school.

The leaves show examples of how these aspects are shown.

The school logo in the centre of the tree represents the Christian ethos that is at the heart of everything we do.



## Respect Charter

### at Brighstone CE Aided Primary School

At Brighstone CE Aided Primary School we believe staff, parents and children are entitled to a safe and protective environment in which to learn and work. We strive to ensure that our school offers a warm and nurturing environment. All members of the school community and visitors should demonstrate mutual respect, to feel safe, work together and to use restorative approaches as the foundation of our practice. Any behaviour that may lead to feelings of harassment, alarm or distress to members of our community, will not be tolerated and action taken.

#### Expectations

- That all adults set a good example to children at all times, showing them how to get along with all members of the school and the wider community.
- That no one - staff, governors, parents, carers, volunteers or children - be subjected to abusive behaviour or any form of threats from visitors on the school premises.
- That physical attacks and threatening behaviour, abusive or insulting language verbal or written (including on social media), to staff, governors, parents, carers, volunteers, children and other users of the school premises will not be tolerated and may lead to a ban from school premises and/or police action.

#### Types of behaviour that are considered serious and unacceptable

This is not an exhaustive list but seeks to provide illustrations of such behaviour:

- Shouting, either in person or over the telephone
- Speaking in an aggressive/threatening tone
- Physically intimidating, e.g. standing very close
- The use of aggressive hand gestures/exaggerated movements
- Physical threats
- Shaking or holding a fist towards another person
- Swearing and name calling
- Pushing
- Slapping, punching, hitting or kicking
- Racist, homophobic or other hateful behaviour
- Sexist comments or sexual innuendo
- Disrespecting religion or belief
- Inappropriate communications (posting on Social Networking sites, emails or letters, etc.) which could bring the school into disrepute or be deemed as bullying, harassment and/or a hate-related

The school reserves the right to take any necessary actions to ensure that members of the school community are not subjected to any form of abuse in line with policy and procedure. If you choose to engage in these behaviours you may be asked to leave the site or the police may be called.

**Thank you for your understanding and support**



If your message is **urgent** or about **attendance** contact Mrs Pelosi in the **office**:  
**01983 740285**  
office@brighstoneprimary.org.uk  
Office Hours 8am - 4pm

If you would like to speak with the **Headteacher** Mrs Lennon, you can find her at the school gate every morning or you can call 740285 to make an appointment with her



For **general enquiries** you can call or email the office, text the school messaging service or send a message to our school **Facebook** page: <https://www.facebook.com/BrighstoneCEPrimarySchool>  
*Our Facebook page is open so you do not need a personal account to view it*

If you have concerns about your child's **learning** and progress, email the class teacher in the first instance and allow at least 1 working day for a reply:

Years R, 1 & 2 - teacher.bumblebee@brighstoneprimary.org.uk  
Years 3 & 4 - teacher.honeybee@brighstoneprimary.org.uk  
Years 5 & 6 - teacher.ivybee@brighstoneprimary.org.uk

If you have concern regarding **safeguarding** or your **child's mental health and wellbeing** please contact Mrs Jones. You can speak to her on the playground every morning, call into the school office or email m.jones@brighstoneprimary.org.uk  
safeguarding@brighstoneprimary.org.uk

Our **Newsletter** is published every Friday with key information for parents and carers. You can find it on our school website: <https://www.brighstoneprimary.org.uk/category/the-buzz/>

## Contact us



If you have a safeguarding concern about a child outside of school hours you can call the police on 999 if you feel they are at risk of immediate harm or contact Children's Services on 0300 300 0117

Please be reminded that all children need to wear the correct PE kit on PE days.  
The correct PE kit is also needed for sports clubs.  
Socks and hair accessories must be in the school colours.

### School Day Timings

The school day is as follows:

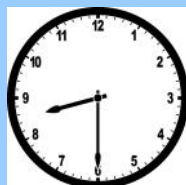
8.25am: Gates open

8.30am: School starts

3pm: School ends

3.10pm: Gates close

Many thanks.



## Key dates this year

- Friday 14th February: Last day of term; end-of-term disco
- Monday 24th February: Back to school
- Monday 3rd March: National offer day for secondary admissions
- Thursday 6th March: World Book Day
- Tuesday 18th and Wednesday 19th March: Parents evenings
- Wednesday 26th - Friday 28th March: Y4 residential to Little Canada
- Friday 4th April: Last day of term
- Wednesday 16th April: National offer day for primary admissions
- Tuesday 22nd April: Back to school
- W/c Monday 12th May: Y6 SATs week
- Friday 23rd May: Last day of term
- Tuesday 3rd June: Back to school
- Friday 27th June: Sports Day
- Tuesday 15th July: Parents evening
- Wednesday 16th - Friday 18th July: Y6 London residential
- Friday 25th July: Last day of term

This list is regularly updated.

### School Term Dates for 2024-2025

Please note that the school will be closed on the following days in this academic year:

Day 1: Monday 2nd September 2024

Day 2: Tuesday 3rd September 2024

Day 3: Monday 2nd June 2025

Day 4: Monday 28th July 2025

Day 5: Tuesday 29th July 2025

Term dates are available on our school website.

