

The Buzz

28th February



Learning and Achieving Through
Love, Courage and Respect

Dear parents, carers and children,

It's only the first week back after half term, and it's been so busy!



On Tuesday, Reception children took delivery of their brand new bespoke **mud kitchen**. It was built for us by Splinter Wood Products, part of the Care in the Garden team based at Palmer's Brook Nursery in Wootton, which creates jobs for adults with additional needs on the Island. The children were very excited to watch the lorry come into the playground and could see how heavy the mud kitchen is. Huge thanks to John and his team for their superb craftsmanship. We would like to thank Mr and Mrs Capelin (Mrs Cousins' parents) for their very generous donation and the BSA for funding the remainder of the money. We can't wait to get out there and play (and that's just the staff!)



On Wednesday, I took six representatives from the **EARA group** to the termly IOW EARA meeting, which was held at Haylands Primary this time. Minnie Moore, the leader, carried out activities with us that focused on how everyone is unique and special, which is all part of our work on inclusivity and diversity. The children were then encouraged to think about kindness (which, incidentally, was the Oxford Children's Word of the Year for 2024), and come up with examples of kind words and deeds. Our children then presented a PPT on some research we had done about children's career aspirations and if jobs portrayed on Google Images are still depicted as stereotypically 'male' or 'female' jobs, and wondered if this could sometimes have a subconscious effect on what people want to do. Well done to Alyssa, Rufus, Holly, Annie, Skye and Quinn, for being super ambassadors.



After school on Wednesday, we were all treated to a taster session from **Chartwells**. Ed and Sharon presented delicious sweet and savoury samples of the menu. They went down a treat! If there are any children who are unsure if they would like a school dinner, then parents can always order one and bring in a spare small packed lunch as well, so they have the option of trying the food, with the packed lunch 'backup' just in case!

Today, **Ivy Bee class** had a very exciting video from Alistair Humphries, who wrote *The Girl Who Rowed the Ocean*, the book that they are currently reading in class. They sent questions in advance, which he answered in a YouTube video. He was fascinating to listen to, and we found out all about his own adventures sailing across the ocean, on which he based this book. You can watch his video here: <https://youtube.com/live/KvDhD6VwrlIQ?feature=share>



This morning, Boni popped in to promote the **BHS spring show**. Further information about this has been emailed to all.



Welcome back to Mrs Aram, who has returned from maternity leave. We are delighted to share the wonderful news that **Mrs Baker** has had a gorgeous baby boy called Oliver Edward. Huge congratulations to Mr and Mrs Baker!

I hope you have a lovely weekend.

With best wishes,

Mrs Lennon and the Brighstone team

Collective Worship



This week, we been focusing on Forgiveness: Wiping the Slate Clean

We talked about what it means to 'wipe the slate clean'. Christians believe that when they say sorry to God for the wrong things they have done, He forgives them completely and gives them a new start, a clean slate.

Some children read out lines from an acrostic poem (see p2), and everyone discussed which line they thought best described forgiveness (there was no right or wrong answer).

What does forgiveness mean to you?



Have you ever had to forgive someone? Why?

Have you ever been forgiven for something that you did?

"Just as the Lord has forgiven you, so you must also forgive others."
Colossians 3.13

Teaspoon (TSP) Prayer



Dear Lord

Thank you that you offer forgiveness to all, through Jesus

Sorry for the times when we have been slow to say sorry to others or not quick enough to forgive

Please help us to ask for forgiveness when we make a mistake and to accept an apology kindly.

Amen

School Dinners

Children in **Year R, 1 and 2** are entitled to a 'universal' **free** school meal everyday.

Children in Years 3-6 are charged at **£3.20** per day. Yoghurt, fruit, salad and jacket potatoes are available every day.

Week 3	Monday	Tuesday	Wednesday	Thursday	Friday
Option 1	Pizza	Bangers and Mash	Roast Chicken	Hot Dogs	Fish Fingers
Option 2	BBQ Quorn Fillet	Quorn Sausages	Veggie Slice	Veggie Hot Dogs	Omelette
Dessert	Brownie with Fruit	Pancakes	Cookie	Rocky Road	Ice Cream

Poetry Corner

This week's poem is an acrostic poem, which links to our Collective Worship theme.

Forgiveness is...

- Forgetting the hurts
- Offering a new beginning
- Restoring a friendship
- Given and received
- Identifying responsibility
- Valuing the truth
- Ending an argument
- Not holding a grudge
- Encouraging honesty
- Saying sorry
- Starting again

Which line do you think best describes forgiveness and why?



Reading Recommendations

Each week, we include a book recommendation from a child and/or adult.

This week, Ila recommends *The Girl Who Rowed The Ocean* by Alistair Humphreys

I recommend this book because it talks about what you can do at a really young age. The main character, Lucy, is only 11 and rowed the Atlantic Ocean all by herself. It's based on Alistair's own adventures when he rowed the ocean, but he did it with three other people. It's really exciting, because when you start reading it, you can't stop!



Safeguarding

If you have a concern about a child you can call the police on 999 if you feel they are at risk of immediate harm

You can contact the NSPCC:

Contact the NSPCC Helpline

If you have any concerns at all about a child's safety or wellbeing, don't hesitate to contact us.

Call us or email help@nspcc.org.uk

0808 800 5000

Find out more

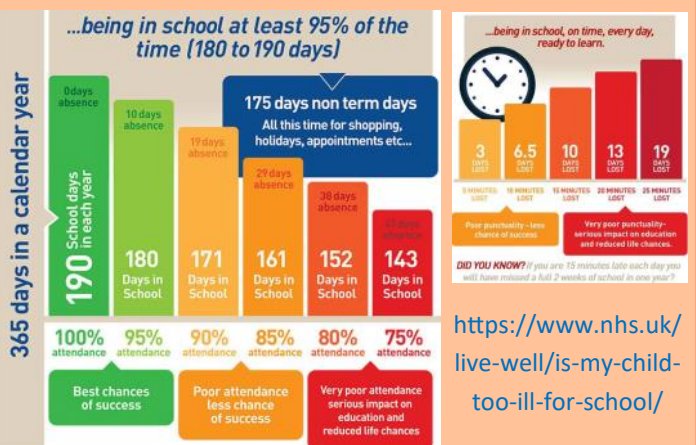
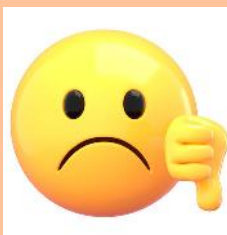
Or call children's services 0300 300 0117

Attendance Matters!

Week Commencing 10th February 2025
(Whole school attendance target: 96.5%)

Actual Attendance: 93.21%

Late marks this week: 13



Golden Book

Bumble Bees

Arthur for being excited to have a go at lots of different activities around the environment.

Harvey and **Luka-Bear** for joining in enthusiastically with the speed sounds lessons, and excellent focus when completing her independent writing.

Theodore for carefully sorting a selection of magnetic and non-magnetic materials, one at a time.

Honey Bees

Sky B for showing great resilience in her learning this week.

Alexander for working on his concentration and enthusiasm in Maths.

Ivy Bees

Henry for showing great resilience and enjoyed the decimal addition and subtraction that we have been working on this week.

Sports Bee

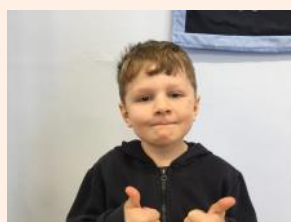
Poppy S for being really engaged in PE lessons, demonstrating the School Games Values and trying her best in every activity.

Bee-haviour

Leo for showing kindness and helping a new child in sensory circuits.

EARA

Quinn, Alexander and **Sammy G** for being respectful in the Cosy Cabin area *Nominated by Helena in Y4*



Plea for donations of: Table lamps, fairy lights, cushions and plants!

At Brighstone, we would like to develop our classrooms into calmer, more neutral 'therapeutic classrooms'.

"Therapeutic classrooms are a new approach that redefines the traditional classroom set up. The average UK classroom is bright, cluttered, overwhelming and outdated, and is not designed around the needs of our children today.

Children deserve to feel comfortable, safe and inspired, especially when we know there has been a rise in the numbers of children struggling with their social, emotional and mental health. Teachers up and down the country are reporting increases in school refusal, dysregulated behaviours, disengagement and low social skills. Making changes to the classroom can help."

What is a therapeutic classroom?

"Therapeutic classrooms are welcoming, safe, inviting environments that cultivate learning through their design. They calm stress hormones and increase feelings of emotional safety, whilst meeting the emotional and mental health needs of the children. Therapeutic classrooms include calm spaces and flexible seating in every room as standard, and allow children to work where they feel most comfortable.

They take into consideration space, lighting, comfortability, accessibility, inclusivity and connective learning. Therapeutic classrooms are inspiring places that children want to be in and are underpinned by science. "

<https://www.tpctherapy.co.uk/therapeutic-classrooms/>

To start this process, we are looking to introduce **table lamps** and **fairy lights** (so we can turn off or reduce the use of the bright overhead lighting), **cushions** (to make comfy seating areas) and **plants**.

As budget is tight, we are wondering if you have, or know of anyone who has, any spare table lamps, cushions, fairy lights and plants that you no longer need. To minimise the use of bright colours, ideally these new furnishings need to be in neutral colours.

Please contact the school office if you have anything that you would like to donate.

Thank you!



IMPORTANT INFORMATION

Road Closures and Bus Times

We have been asked to share the following information with parents/carers.

Brighstone Gate Lane, Brighstone

Closed from 0830 on Monday 3rd March to Friday 14th March

Route: 209

Monday AM: the bus will get through fine. From Monday PM bus will operate from the school right to Shorwell first and then through Kingston, Chale, Military Road to Hulverstone.

AMs - Bus will start at Shorwell as normal then when it picks up at Hulverstone it will turn and come back via Military Road to school.

No stops will be missed; it will just about 5 minutes later at the school AM. PM will be earlier at Shorwell and later at Hulverstone.

As a school, we have made arrangements with Tony the bus driver to minimise the disruption in timings for parents/carers. We will cross the children across the road onto the doctors' pathway where there will be a temporary bus stop for them to embark onto the coach. Doing it this way means that the children who are dropped off in Shorwell will arrive 3-4 minutes earlier and the rest of the children should only be 1-2 minutes late.

If you have any questions, please do not hesitate to contact the school office.

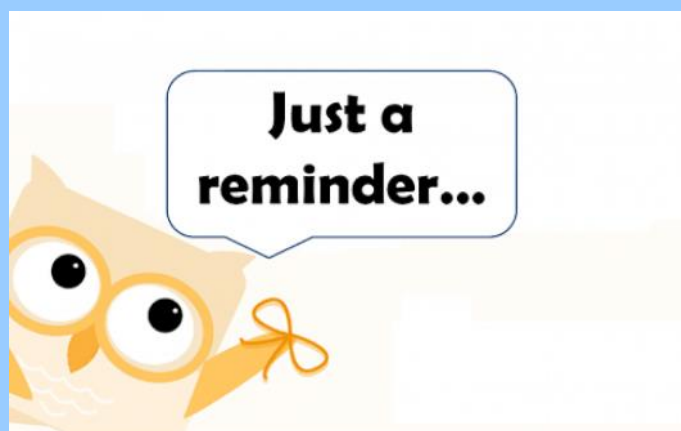
Thank you for your understanding.

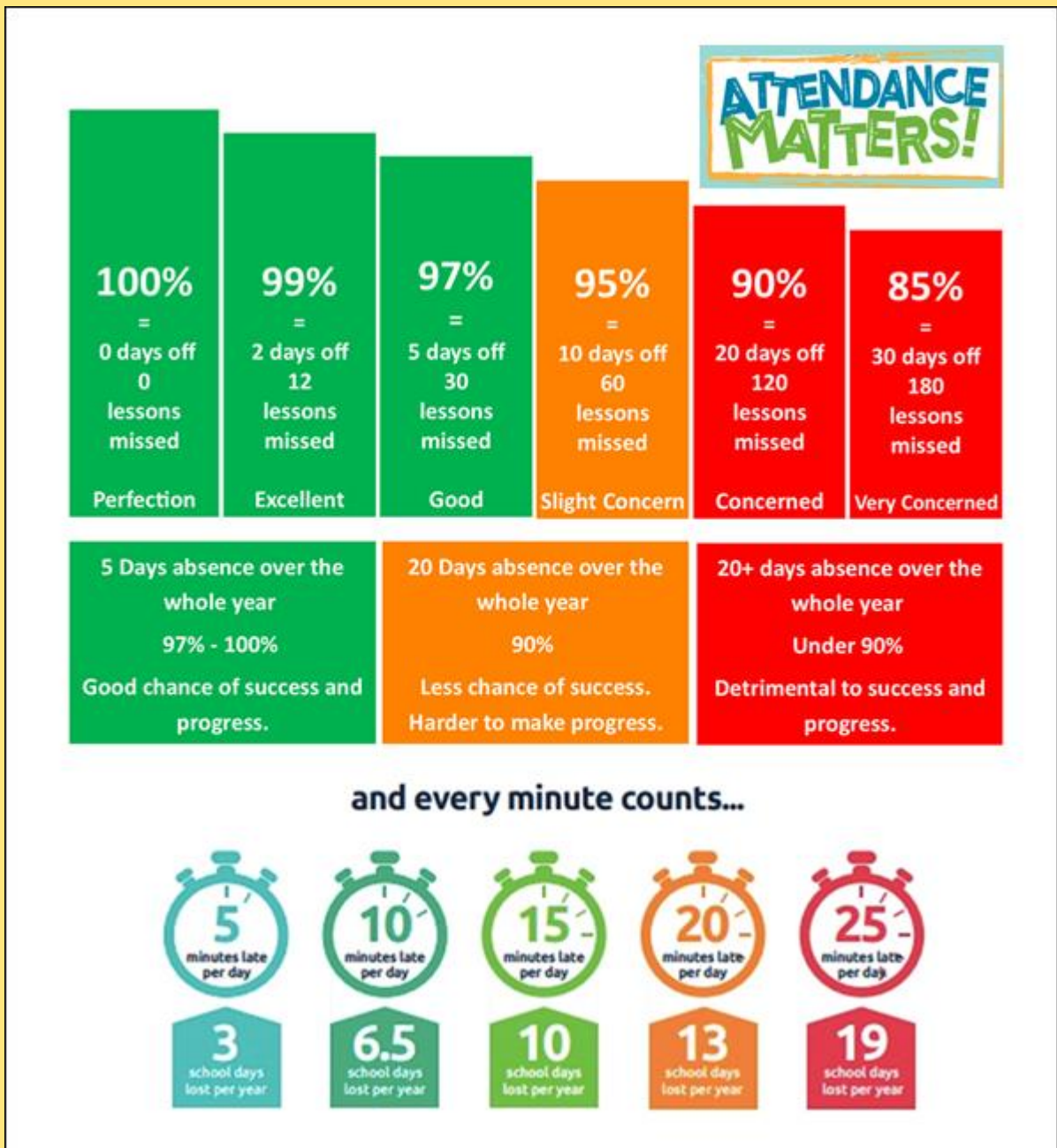


Reminders

- PE Kit is navy blue top/jumper/hoodie with navy blue bottoms - **Branded items are not permitted**
- All hair accessories, socks, shoes and trainers must be in the school colours: navy blue, grey, black or white (no novelty socks)
- All long hair must be tied back (pony tail, bun, plaits etc...) to avoid the spreading of head lice
- No jewellery to be worn other than stud earrings, which must be removed or taped over on PE days
- Gates open at 8.25am and are locked at 8.30am, and in the afternoon, gates are opened at 2.55pm and locked at 3.10pm
- **As teachers are busy welcoming and supervising children first thing in the morning, please could all messages be given to Mrs Pelosi in the office, who will then pass them on to the teacher**
- Only **water** is allowed in drinks bottles, and snacks must be fruit only

Thank you!





At Brighstone Primary School we have high expectations for our children. This begins with attendance and punctuality as they are important life skills to learn.

Good school attendance habits are best started early. Children learn from those around them and you as parents/carers set the standards and expectations for your child. Lateness has a negative impact; being late may disrupt already settled children and lessons, affect achievement and embarrass, worry or upset your child. We understand that there may be an occasional unavoidable instance where you are late, but if it happens frequently, please let us know if there may be something that we can do to help.

What to do if your child is unwell:

Check the NHS Guidance: <https://www.nhs.uk/live-well/is-my-child-too-ill-for-school/>

You should notify the school office before 9am every morning your child is unable to attend due to illness. You can either telephone on 740285 or email on office@brighstoneprimary.org.uk. Telephone calls must be followed up in writing to authorise the (illness) absence.



BSA ASTRA RECYCLING BIN

We take...

Clothes
Shoes
Bed Linen
Accessories
(Such as belts, hats & handbags)
Soft Toys

We can't take...

Duvets or Cushions
Off Cuts
Carpet or Curtains



Find our recycling bin at the front entrance of the school.

*Parents,
Family members
& friends of Brighstone
Primary School*

**Does your place of
work offer the Match
Funding Scheme?**

Get in touch with us if your employers could help our BSA fundraisers via email at brighstoneschoolassoc@gmail.com



On **Thursday 6th March**, we will be celebrating World Book Day.

Children can come to school in their PJs, snoodies, dressing gowns, etc... to enjoy snuggling up with a book in school.

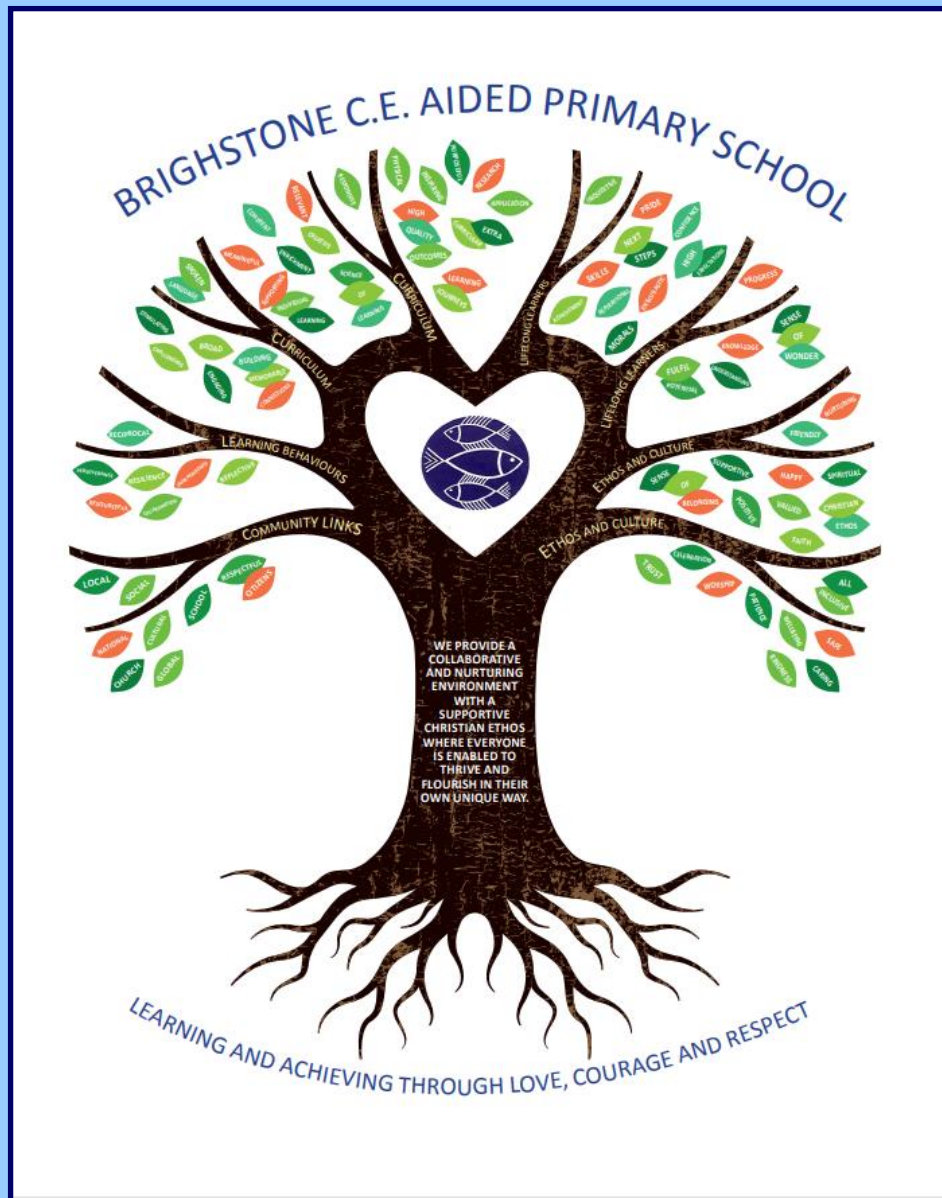
We will be enjoying a visit to the village library, taking part in a Hive Book Quiz, hearing stories read by pupils from Ivy Bee class, and lots more!

Children are also invited to take part in a Photo Challenge. As the theme is 'Read Your Way', children can take photos of themselves 'reading in their way' (e.g. up a tree, on the beach, in a hammock, with their pet, etc...) and email them to the school office for a display in school; we'd love to see them. The most creative win prizes from the Scholastic Book Fair (see below).

After half term, your child will bring home a World Book Day voucher to use in any participating bookshops.

During w/c 17th March, we will also be holding a **Scholastic Book Fair**, with lots of amazing books to choose from. Your WBD vouchers can also be redeemed against these, so you may wish to keep them until then. (And, because we don't need to collect them in, they have said that you can then use them again in another shop!).

Our Vision Statement



A vision statement 'seeks to inspire and give direction to all stakeholders (staff, children, parents, governors and the wider community). It is an aspirational description of what an organisation would like to achieve or accomplish in the mid-term or long-term future. It is intended to serve as a clear guide for choosing current and future courses of action'.

Our vision statement works alongside our mission statement 'Learning and Achieving Through Love, Courage and Respect', which includes our values, to reflect and guide our culture, ethos and decision making. This is also on our website.

As a school, in 2020 we worked together with a range of stakeholders to write our vision statement, and we decided to create a visual vision statement to make it stand out and be memorable. Each part of the image has been carefully chosen to represent our school:

Our values, as part of the mission statement (tagline), are the roots and foundation that feed and nourish our school.

The vision statement is the main body (trunk) that guides all our actions.

The branches reflect the different aspects of life in our school.

The leaves show examples of how these aspects are shown.

The school logo in the centre of the tree represents the Christian ethos that is at the heart of everything we do.



Respect Charter

at Brighstone CE Aided Primary School

At Brighstone CE Aided Primary School we believe staff, parents and children are entitled to a safe and protective environment in which to learn and work. We strive to ensure that our school offers a warm and nurturing environment. All members of the school community and visitors should demonstrate mutual respect, to feel safe, work together and to use restorative approaches as the foundation of our practice. Any behaviour that may lead to feelings of harassment, alarm or distress to members of our community, will not be tolerated and action taken.

Expectations

- o That all adults set a good example to children at all times, showing them how to get along with all members of the school and the wider community.
- o That no one - staff, governors, parents, carers, volunteers or children - be subjected to abusive behaviour or any form of threats from visitors on the school premises.
- o That physical attacks and threatening behaviour, abusive or insulting language verbal or written (including on social media), to staff, governors, parents, carers, volunteers, children and other users of the school premises will not be tolerated and may lead to a ban from school premises and/or police action.

Types of behaviour that are considered serious and unacceptable

This is not an exhaustive list but seeks to provide illustrations of such behaviour:

- o Shouting, either in person or over the telephone
- o Speaking in an aggressive/threatening tone
- o Physically intimidating, e.g. standing very close
- o The use of aggressive hand gestures/exaggerated movements
- o Physical threats
- o Shaking or holding a fist towards another person
- o Swearing and name calling
- o Pushing
- o Slapping, punching, hitting or kicking
- o Racist, homophobic or other hateful behaviour
- o Sexist comments or sexual innuendo
- o Disrespecting religion or belief
- o Inappropriate communications (posting on Social Networking sites, emails or letters, etc.) which could bring the school into disrepute or be deemed as bullying, harassment and/or a hate-related

The school reserves the right to take any necessary actions to ensure that members of the school community are not subjected to any form of abuse in line with policy and procedure. If you choose to engage in these behaviours you may be asked to leave the site or the police may be called.

Thank you for your understanding and support

If your message is **urgent** or about **attendance** contact Mrs Pelosi in the **office**:
01983 740285
office@brighstoneprimary.org.uk
Office Hours 8am - 4pm

If you would like to speak with the **Headteacher** Mrs Lennon, you can find her at the school gate every morning or you can call 740285 to make an appointment with her



For **general enquiries** you can call or email the office, text the school messaging service or send a message to our school **Facebook** page: <https://www.facebook.com/BrighstoneCEPrimarySchool>
Our Facebook page is open so you do not need a personal account to view it

If you have concerns about your child's **learning** and progress, email the class teacher in the first instance and allow at least 1 working day for a reply:

Years R, 1 & 2 - teacher.bumblebee@brighstoneprimary.org.uk
Years 3 & 4 - teacher.honeybee@brighstoneprimary.org.uk
Years 5 & 6 - teacher.ivybee@brighstoneprimary.org.uk

If you have concern regarding **safeguarding** or your **child's mental health and wellbeing** please contact Mrs Jones. You can speak to her on the playground every morning, call into the school office or email m.jones@brighstoneprimary.org.uk
safeguarding@brighstoneprimary.org.uk

Our **Newsletter** is published every Friday with key information for parents and carers. You can find it on our school website: <https://www.brighstoneprimary.org.uk/category/the-buzz/>

Contact us



If you have a safeguarding concern about a child outside of school hours you can call the police on 999 if you feel they are at risk of immediate harm or contact Children's Services on 0300 300 0117

Please be reminded that all children need to wear the correct PE kit on PE days.
The correct PE kit is also needed for sports clubs.
Socks and hair accessories must be in the school colours.

School Day Timings

The school day is as follows:

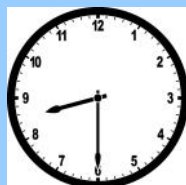
8.25am: Gates open

8.30am: School starts

3pm: School ends

3.10pm: Gates close

Many thanks.



Key dates this year

- Monday 3rd March: National offer day for secondary admissions
- Thursday 6th March: World Book Day
- Tuesday 18th and Wednesday 19th March: Parents evenings
- Wednesday 26th - Friday 28th March: Y4 residential to Little Canada
- Friday 4th April: Last day of term
- Wednesday 16th April: National offer day for primary admissions
- Tuesday 22nd April: Back to school
- W/c Monday 12th May: Y6 SATs week
- Friday 23rd May: Last day of term
- Tuesday 3rd June: Back to school
- Friday 27th June: Sports Day
- Tuesday 15th July: Parents evening
- Wednesday 16th - Friday 18th July: Y6 London residential
- Friday 25th July: Last day of term

This list is regularly updated.

School Term Dates for 2024-2025

Please note that the school will be closed on the following days in this academic year:

Day 1: Monday 2nd September 2024

Day 2: Tuesday 3rd September 2024

Day 3: Monday 2nd June 2025

Day 4: Monday 28th July 2025

Day 5: Tuesday 29th July 2025

Term dates are available on our school website.

