

The Buzz

14th March



Learning and Achieving Through
Love, Courage and Respect

Dear parents, carers and children,



On Tuesday, KS2 had a great morning at **Dimbola Museum**. This was part of the Pride In Self, Pride In Place project on the island. The children learnt about two remarkable women, Julia Margaret Cameron and Virginia Woolf, her great niece, who made significant contributions to photography/art and literature. As part of the morning's activities, the children set out on a trail up the downs around Dimbola Lodge (Julia's house), seeing the area where Virginia Woolf lived, and on the way got



a glimpse of what inspired Tennyson (who walked up the downs every day!) and saw the inspiration for Alice in Wonderland (the beautiful countryside). They learnt about diversity, equality, inclusion and respect through a badge design activity, and took part in a quiz around the museum to find out more about Julia Margaret Cameron. Through their stories, children learnt about the importance of creativity, self-expression, and the progress of women's rights. We also explored how these talented women challenged the norms of their time, paving the way for future generations. The aim of the Pride in Self, Pride in Place project is to give children a better understanding of history, inspire them to express their own ideas, and encourage them to appreciate the contributions of people from diverse backgrounds. The hope is to instil a sense of curiosity about how social changes happen and how individuals can make a difference, just like Julia and Virginia did. Thank you to Franko, Kelly and Sandy!



Our newly-formed, self-named **Nature Protectors** prepared and led an assembly on Wednesday. They had a strong message to give to the rest of the school: look after the nature around the school grounds. Afterwards, they did a Question and Answer session, answering the children's questions admirably! They did really well, and we are very proud of them. Well done to Lilli, Rosie, Fred, Martha and Charlotte!

I would like to take this opportunity to say a huge thank you to those who have sent in donations for our **therapeutic classrooms** plea (see p4 of the Buzz). So far we have had cushions, a standard lamp and a £40 donation, which is really kind. If you have any spare cushions or lamps (in neutral, calm colours) that you no longer need, please do let us know. Every little helps!

THANK YOU!



Next week sees the arrival of the **Scholastic Book Fair**, which will be held in the school hall. Children can choose from a huge range of exciting books (starting from as little as £2.99). Parents can pay for these online, or in cash. Every book you buy also helps to get free books for the school. See the separate email for further details. Which book will you choose?!

On Monday 17th March, there will be a **BSA meeting** at 6.30pm. This will be in person in Honey Bee classroom, as well as via Teams. The link will be sent out on Monday. All welcome!



Reminders

Please make sure that all required documentation (e.g. consent forms for trips) and payments are submitted in a timely manner. This is to avoid disruption or delays, and to ensure we can manage time and resources effectively. Many thanks.

I hope you have a lovely weekend. Good luck to those who are submitting entries to the Brighstone Horticultural Society's spring show!



With best wishes,
Mrs Lennon and the Brighstone team

Collective Worship

This week, we been focusing on Forgiveness: Forgiving others as God has forgiven you

We listened to (and acted out) the story of The Unforgiving Servant. This is one of the stories that Jesus told.

Have you ever been in a situation where you have forgiven someone? Have you ever asked for forgiveness yourself?

Jesus said: "If you forgive others the wrongs they have done to you, your Father in Heaven will also forgive you." Matthew 6:14



A Forgiveness Prayer



Lord Jesus,
Help us to be ready to show forgiveness to others,
As you are ready to show forgiveness to us.
Amen

School Dinners

Children in **Year R, 1 and 2** are entitled to a 'universal' **free** school meal everyday.

Children in Years 3-6 are charged at **£3.20** per day. Yoghurt, fruit, salad and jacket potatoes are available every day.

Week 2	Monday	Tuesday	Wednesday	Thursday	Friday
Option 1	Veggie Pizza	Beef Bolognese	Roast Pork	Chicken Pie	Chicken Burger
Option 2	Veggie Fajita	Chinese Veg Noodles	Veggie Hotpot	Macaroni Cheese	Quorn Dippers
Dessert	Chocolate Mousse	Sponge and Custard	Jelly	Chocolate Cookie	Glazed Sponge

Poetry Corner

Rabbit

Lipperty Lipperty
Hoppity Hop
Whiffly Sniffly
Flippety Flop
Scratchety Scratchety
Twitchety Jump
Sniggly Snuggly
Jumpety Thump

Caryl Hart

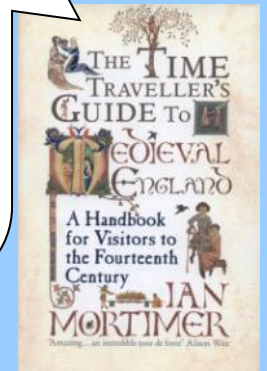


Reading Recommendations

Each week, we include a book recommendation from a child and/or adult.

This week, Mrs Sharp recommends *The Time Traveller's Guide to Medieval England* by Ian Mortimer.

I recommend this book because, in it, we all learn about "1066 and all that", kings, queens and battles etc, and also "what was life like in the towns and villages?" Ian Mortimer's excellent research positions you slap bang into the muddy gutter of everyday medieval life and immerses you into the everyday sights, sounds and even smells that are a world away from the royal castle and our comfy centrally-heated homes.



Safeguarding

If you have a concern about a child you can call the police on 999 if you feel they are at risk of immediate harm

You can contact the NSPCC:

Contact the NSPCC Helpline

If you have any concerns at all about a child's safety or wellbeing, don't hesitate to contact us.

Call us or email help@nspcc.org.uk

0808 800 5000

Find out more

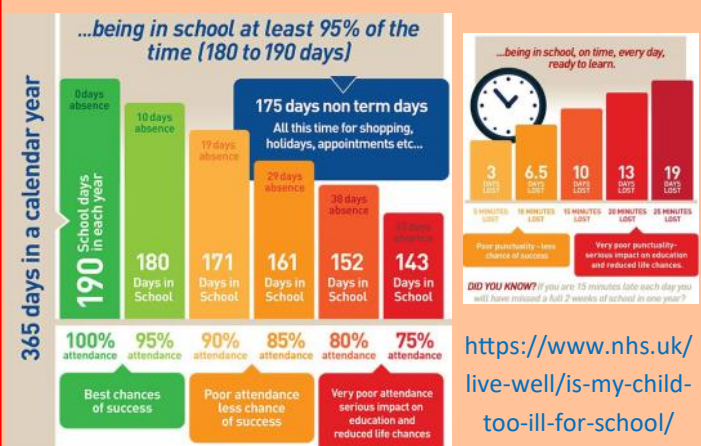
Or call children's services 0300 300 0117

Attendance Matters!

Week Commencing 10th March
(Whole school attendance target: 96.5%)

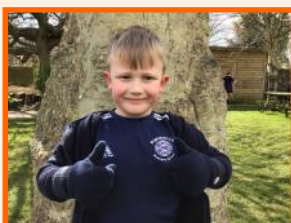
Actual Attendance: **96.94%**

Late marks this week: 12



Golden Book

Bumble Bees	<p>James for writing independently in Drawing Club this week.</p> <p>Molly for enthusiastic learning about Florence Nightingale and Mary Seacole in History.</p> <p>Hudson for explaining that sometimes, when paper is flat it will sink, but when it is made into the shape of a boat, it floats.</p> <p>George for remembering the word 'absorbent' to describe what happened to the piece of cotton wool that we dropped into our tank.</p> <p>Nathan and William for reading with great expression in RWI.</p> <p>Bram for making a great observation about how he thought an empty bottle would float but if we fill it with water, it would sink, and for choosing to read a book in his Busy Bee time.</p>
Honey Bees	(Next week)
Ivy Bees	Hugh for super attention and effort in Science.
EARA	<p>Helena because she was a good friend in Computing. <i>Nominated by Holly Y3 & Alyssa Y4.</i></p> <p>Quinn because he has a love of learning. <i>Nominated by Holly Y3 & Alyssa Y4</i></p>
Sports Bee	Nathan for great enthusiasm in PE and for showing the schools games values.



Plea for donations of: Table lamps, fairy lights, cushions and plants!

At Brighstone, we would like to develop our classrooms into calmer, more neutral 'therapeutic classrooms'.

"Therapeutic classrooms are a new approach that redefines the traditional classroom set up. The average UK classroom is bright, cluttered, overwhelming and outdated, and is not designed around the needs of our children today.

Children deserve to feel comfortable, safe and inspired, especially when we know there has been a rise in the numbers of children struggling with their social, emotional and mental health. Teachers up and down the country are reporting increases in school refusal, dysregulated behaviours, disengagement and low social skills. Making changes to the classroom can help."

What is a therapeutic classroom?

"Therapeutic classrooms are welcoming, safe, inviting environments that cultivate learning through their design. They calm stress hormones and increase feelings of emotional safety, whilst meeting the emotional and mental health needs of the children. Therapeutic classrooms include calm spaces and flexible seating in every room as standard, and allow children to work where they feel most comfortable.

They take into consideration space, lighting, comfortability, accessibility, inclusivity and connective learning. Therapeutic classrooms are inspiring places that children want to be in and are underpinned by science. "

<https://www.tpctherapy.co.uk/therapeutic-classrooms/>

To start this process, we are looking to introduce **table lamps** and **fairy lights** (so we can turn off or reduce the use of the bright overhead lighting), **cushions** (to make comfy seating areas) and **plants**.

As budget is tight, we are wondering if you have, or know of anyone who has, any spare table lamps, cushions, fairy lights and plants that you no longer need. To minimise the use of bright colours, ideally these new furnishings need to be in neutral colours.

Please contact the school office if you have anything that you would like to donate.

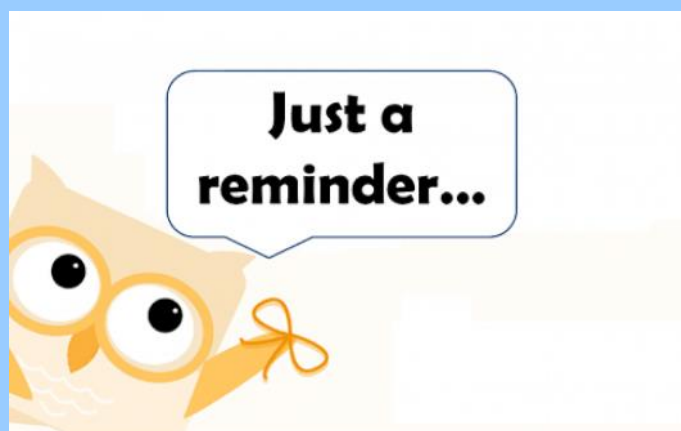
Thank you!

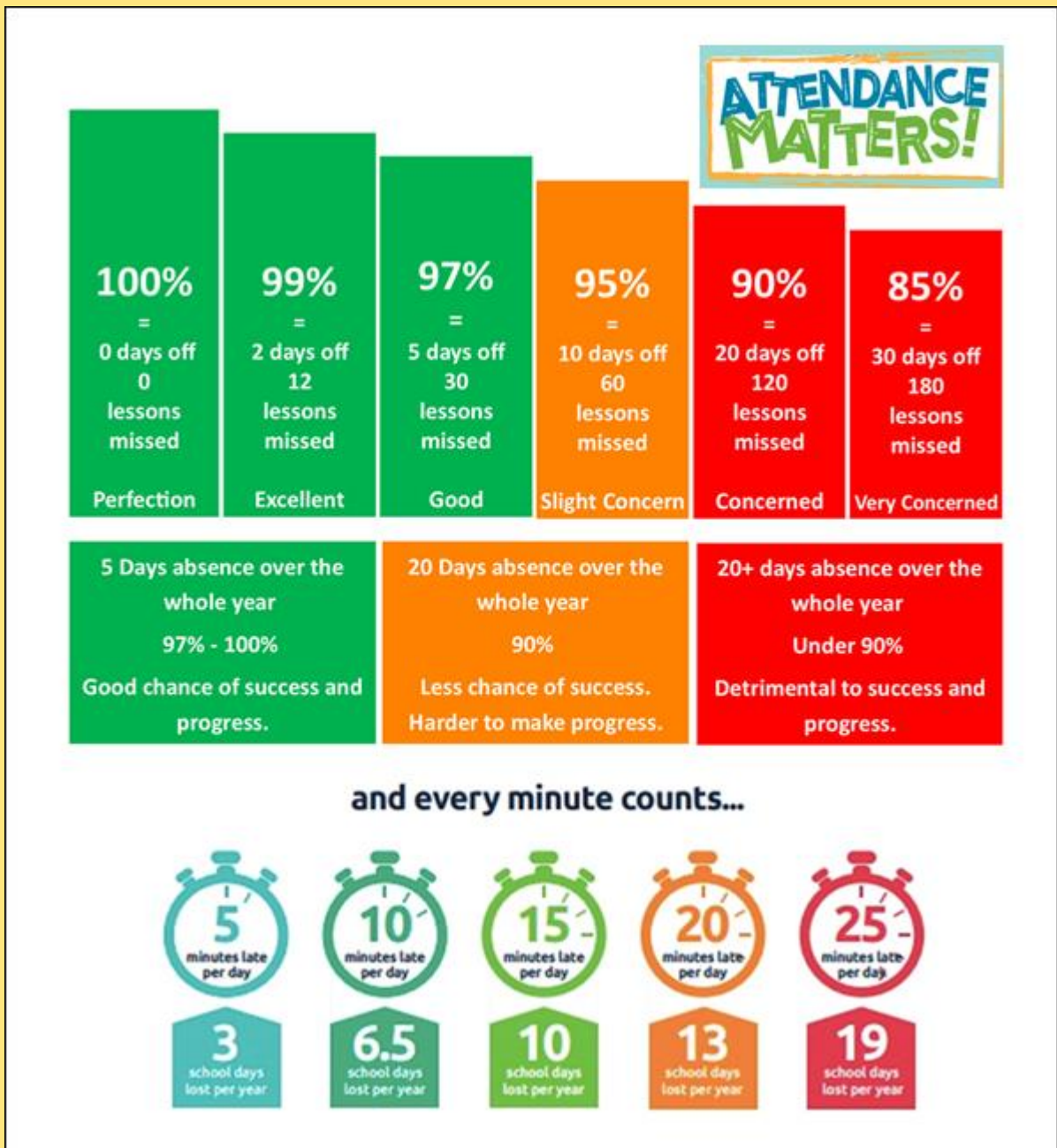


Reminders

- PE Kit is navy blue top/jumper/hoodie with navy blue bottoms - **Branded items are not permitted**
- All hair accessories, socks, shoes and trainers must be in the school colours: navy blue, grey, black or white (no novelty socks)
- All long hair must be tied back (pony tail, bun, plaits etc...) to avoid the spreading of head lice
- No jewellery to be worn other than stud earrings, which must be removed or taped over on PE days
- Gates open at 8.25am and are locked at 8.30am, and in the afternoon, gates are opened at 2.55pm and locked at 3.10pm
- **As teachers are busy welcoming and supervising children first thing in the morning, please could all messages be given to Mrs Pelosi in the office, who will then pass them on to the teacher**
- Only **water** is allowed in drinks bottles, and snacks must be fruit only

Thank you!





At Brighstone Primary School we have high expectations for our children. This begins with attendance and punctuality as they are important life skills to learn.

Good school attendance habits are best started early. Children learn from those around them and you as parents/carers set the standards and expectations for your child. Lateness has a negative impact; being late may disrupt already settled children and lessons, affect achievement and embarrass, worry or upset your child. We understand that there may be an occasional unavoidable instance where you are late, but if it happens frequently, please let us know if there may be something that we can do to help.

What to do if your child is unwell:

Check the NHS Guidance: <https://www.nhs.uk/live-well/is-my-child-too-ill-for-school/>

You should notify the school office before 9am every morning your child is unable to attend due to illness. You can either telephone on 740285 or email on office@brighstoneprimary.org.uk. Telephone calls must be followed up in writing to authorise the (illness) absence.



Mothers Day Gifting

*For special Mums,
Grandparents or other special
people in your child's life ♥*

*Each gift will be a lovely potted
floral plant with a label
personalised by your child.
More than 1 can be purchased by
each child.*

£3 per gift
purchased via the link below:



[https://www.pta-
events.co.uk/brighstoneschoolassociatio
n/index.cfm?
event=event&eventId=96215](https://www.pta-events.co.uk/brighstoneschoolassociation/index.cfm?event=event&eventId=96215)



BRIGHSTONE SCHOOL ASSOCIATION MEETING

Monday
17
March

@ 18:30
Honeybee
Classroom

**Will also be set up to join
online via teams. Link will be
sent out nearer the time.**



*Parents,
Family members
& friends of Brighstone
Primary School*

**Does your place of
work offer the Match
Funding Scheme?**

Get in touch with us if your employers could help our BSA fundraisers via email at brighstoneschoolassoc@gmail.com

BSA ASTRA RECYCLING BIN

We take...

Clothes
Shoes
Bed Linen
Accessories
(Such as belts, hats & handbags)
Soft Toys

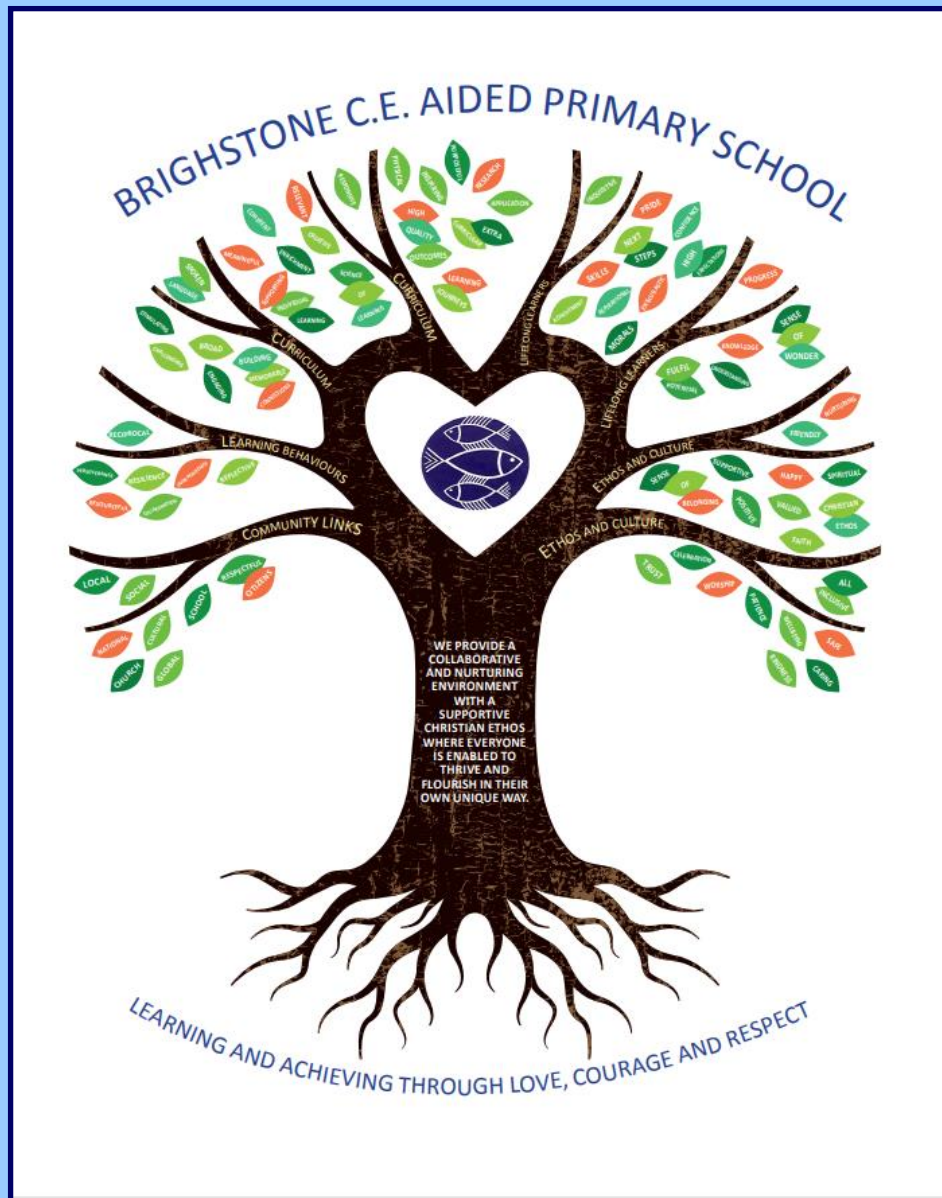
We can't take...

Duvets or Cushions
Off Cuts
Carpet or Curtains



Find our recycling bin at the front entrance of the school.

Our Vision Statement



A vision statement 'seeks to inspire and give direction to all stakeholders (staff, children, parents, governors and the wider community). It is an aspirational description of what an organisation would like to achieve or accomplish in the mid-term or long-term future. It is intended to serve as a clear guide for choosing current and future courses of action'.

Our vision statement works alongside our mission statement 'Learning and Achieving Through Love, Courage and Respect', which includes our values, to reflect and guide our culture, ethos and decision making. This is also on our website.

As a school, in 2020 we worked together with a range of stakeholders to write our vision statement, and we decided to create a visual vision statement to make it stand out and be memorable. Each part of the image has been carefully chosen to represent our school:

Our values, as part of the mission statement (tagline), are the roots and foundation that feed and nourish our school.

The vision statement is the main body (trunk) that guides all our actions.

The branches reflect the different aspects of life in our school.

The leaves show examples of how these aspects are shown.

The school logo in the centre of the tree represents the Christian ethos that is at the heart of everything we do.



Respect Charter

at Brighstone CE Aided Primary School

At Brighstone CE Aided Primary School we believe staff, parents and children are entitled to a safe and protective environment in which to learn and work. We strive to ensure that our school offers a warm and nurturing environment. All members of the school community and visitors should demonstrate mutual respect, to feel safe, work together and to use restorative approaches as the foundation of our practice. Any behaviour that may lead to feelings of harassment, alarm or distress to members of our community, will not be tolerated and action taken.

Expectations

- That all adults set a good example to children at all times, showing them how to get along with all members of the school and the wider community.
- That no one - staff, governors, parents, carers, volunteers or children - be subjected to abusive behaviour or any form of threats from visitors on the school premises.
- That physical attacks and threatening behaviour, abusive or insulting language verbal or written (including on social media), to staff, governors, parents, carers, volunteers, children and other users of the school premises will not be tolerated and may lead to a ban from school premises and/or police action.

Types of behaviour that are considered serious and unacceptable

This is not an exhaustive list but seeks to provide illustrations of such behaviour:

- Shouting, either in person or over the telephone
- Speaking in an aggressive/threatening tone
- Physically intimidating, e.g. standing very close
- The use of aggressive hand gestures/exaggerated movements
- Physical threats
- Shaking or holding a fist towards another person
- Swearing and name calling
- Pushing
- Slapping, punching, hitting or kicking
- Racist, homophobic or other hateful behaviour
- Sexist comments or sexual innuendo
- Disrespecting religion or belief
- Inappropriate communications (posting on Social Networking sites, emails or letters, etc.) which could bring the school into disrepute or be deemed as bullying, harassment and/or a hate-related

The school reserves the right to take any necessary actions to ensure that members of the school community are not subjected to any form of abuse in line with policy and procedure. If you choose to engage in these behaviours you may be asked to leave the site or the police may be called.

Thank you for your understanding and support

If your message is **urgent** or about **attendance** contact Mrs Pelosi in the **office**:
01983 740285
office@brighstoneprimary.org.uk
Office Hours 8am - 4pm

If you would like to speak with the **Headteacher** Mrs Lennon, you can find her at the school gate every morning or you can call 740285 to make an appointment with her



For **general enquiries** you can call or email the office, text the school messaging service or send a message to our school **Facebook** page: <https://www.facebook.com/BrighstoneCEPrimarySchool>
Our Facebook page is open so you do not need a personal account to view it

If you have concerns about your child's **learning** and progress, email the class teacher in the first instance and allow at least 1 working day for a reply:

Years R, 1 & 2 - teacher.bumblebee@brighstoneprimary.org.uk
Years 3 & 4 - teacher.honeybee@brighstoneprimary.org.uk
Years 5 & 6 - teacher.ivybee@brighstoneprimary.org.uk

If you have concern regarding **safeguarding** or your **child's mental health and wellbeing** please contact Mrs Jones. You can speak to her on the playground every morning, call into the school office or email m.jones@brighstoneprimary.org.uk
safeguarding@brighstoneprimary.org.uk

Our **Newsletter** is published every Friday with key information for parents and carers. You can find it on our school website: <https://www.brighstoneprimary.org.uk/category/the-buzz/>

Contact us



If you have a safeguarding concern about a child outside of school hours you can call the police on 999 if you feel they are at risk of immediate harm or contact Children's Services on 0300 300 0117

Please be reminded that all children need to wear the correct PE kit on PE days.
The correct PE kit is also needed for sports clubs.
Socks and hair accessories must be in the school colours.

School Day Timings

The school day is as follows:

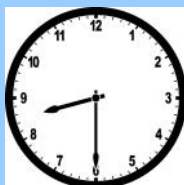
8.25am: Gates open

8.30am: School starts

3pm: School ends

3.10pm: Gates close

Many thanks.



Key dates this year

- Tuesday 18th and Wednesday 19th March: Parents evenings
- Wednesday 26th - Friday 28th March: Y4 residential to Little Canada
- Friday 4th April: Last day of term
- Wednesday 16th April: National offer day for primary admissions
- Tuesday 22nd April: Back to school
- W/c Monday 12th May: Y6 SATs week
- Friday 23rd May: Last day of term
- Tuesday 3rd June: Back to school
- Friday 27th June: Sports Day
- Tuesday 15th July: Parents evening
- Wednesday 16th - Friday 18th July: Y6 London residential
- Friday 25th July: Last day of term

This list is regularly updated.

School Term Dates for 2024-2025

Please note that the school will be closed on the following days in this academic year:

Day 1: Monday 2nd September 2024

Day 2: Tuesday 3rd September 2024

Day 3: Monday 2nd June 2025

Day 4: Monday 28th July 2025

Day 5: Tuesday 29th July 2025

Term dates are available on our school website.

